



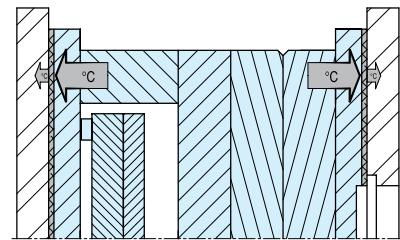
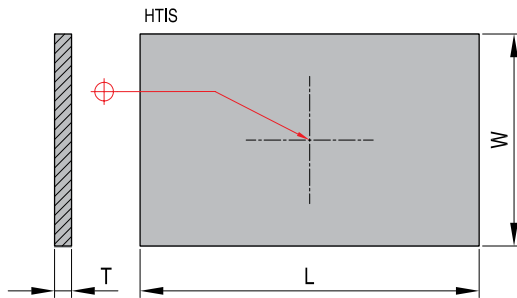
Изоляционные плиты для пресс-форм



HTIS

Insulating plates-asbestos-free

For the insulation of presses and injection molds for thermoplastics and thermoset materials and diecasting dies.
Other sizes available upon request



REF	W	L	T
HTIS-1616-6	152	152	6
HTIS-1620-6	152	192	6
HTIS-1625-6	152	242	6
HTIS-2020-6	192	192	6
HTIS-2025-6	192	242	6
HTIS-2030-6	192	292	6
HTIS-2035-6	192	342	6
HTIS-2040-6	192	392	6
HTIS-2225-6	214	242	6
HTIS-2525-6	242	242	6
HTIS-2530-6	242	292	6
HTIS-2535-6	242	342	6
HTIS-2540-6	242	392	6
HTIS-2550-6	242	492	6
HTIS-3030-6	292	292	6
HTIS-3035-6	292	342	6
HTIS-3040-6	292	392	6

REF	W	L	T
HTIS-3045-6	292	442	6
HTIS-3050-6	292	492	6
HTIS-3055-6	292	542	6
HTIS-3060-6	292	592	6
HTIS-3535-6	342	342	6
HTIS-3540-6	342	392	6
HTIS-3545-6	342	442	6
HTIS-3550-6	342	492	6
HTIS-3560-6	342	592	6
HTIS-4040-10	342	392	10
HTIS-4045-10	342	442	10
HTIS-4050-10	392	492	10
HTIS-4060-10	392	592	10
HTIS-4545-10	442	442	10
HTIS-4550-10	442	492	10
HTIS-4560-10	442	592	10
HTIS-4570-10	442	692	10

REF	W	L	T
HTIS-4580-10	442	792	10
HTIS-5050-10	492	492	10
HTIS-5055-10	492	542	10
HTIS-5060-10	492	592	10
HTIS-5070-10	492	692	10
HTIS-5080-10	492	792	10
HTIS-5555-10	542	542	10
HTIS-5560-10	542	592	10
HTIS-5570-10	542	692	10
HTIS-5580-10	542	792	10
HTIS-6060-10	592	592	10
HTIS-6070-10	592	692	10
HTIS-6080-10	592	792	10
HTIS-6090-10	592	892	10
HTIS-1000-2000-06	1000	2000	6
HTIS-1000-2000-10	1000	2000	10

Technical data		Unit
Compressive strength	24° C	341 N/mm ²
	100° C	188 N/mm ²
	200° C	126 N/mm ²
	260° C	118 N/mm ²
Compressive modulus	24° C	12411 N/mm ²
	218° C	19995 N/mm ²
Max. recommended service temperature		288° C
Thermal conductivity	24° C	2,7 x 10 ⁻³ W/mK
	218° C	3,0 x 10 ⁻³ W/mK
Moisture absorption		0,06 %
Specific weight		1,96 g/cm ³
Flame resistance classification in accordance with UL 94		94 V-0

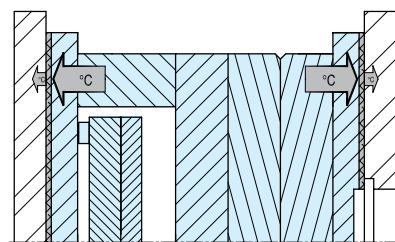
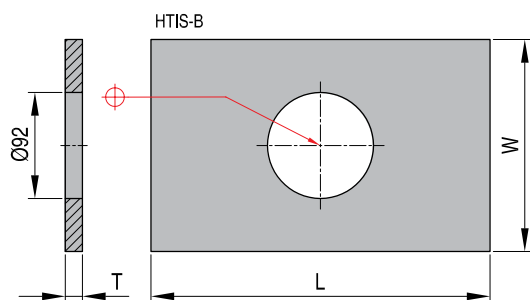
CAD reference point

Insulating plates-asbestos-free

HTISB



For the insulation of presses and injection molds for thermoplastics and thermoset materials and diecasting dies.
Other sizes available upon request



REF	W	L	T
HTISB-1616-6	152,00	152	6
HTISB-1620-6	152,00	192	6
HTISB-1625-6	152,00	242	6
HTISB-2020-6	192,00	192	6
HTISB-2025-6	192,00	242	6
HTISB-2030-6	192,00	292	6
HTISB-2035-6	192,00	342	6
HTISB-2040-6	192,00	392	6
HTISB-2225-6	218,00	242	6
HTISB-2525-6	242,00	242	6
HTISB-2530-6	242,00	292	6
HTISB-2535-6	242,00	342	6
HTISB-2540-6	242,00	392	6
HTISB-2550-6	242,00	492	6
HTISB-3030-6	292,00	292	6
HTISB-3035-6	292,00	342	6

REF	W	L	T
HTISB-3040-6	292,00	392	6
HTISB-3045-6	292,00	442	6
HTISB-3050-6	292,00	492	6
HTISB-3055-6	292,00	542	6
HTISB-3060-6	292,00	592	6
HTISB-3535-6	342,00	342	6
HTISB-3540-6	342,00	392	6
HTISB-3545-6	342,00	442	6
HTISB-3550-6	342,00	492	6
HTISB-3560-6	342,00	592	6
HTISB-4040-10	392,00	392	10
HTISB-4045-10	392,00	442	10
HTISB-4050-10	392,00	492	10
HTISB-4060-10	392,00	592	10
HTISB-4545-10	442,00	442	10
HTISB-4550-10	442,00	492	10

REF	W	L	T
HTISB-4560-10	442,00	592	10
HTISB-4570-10	442,00	692	10
HTISB-4580-10	442,00	792	10
HTISB-5050-10	492,00	492	10
HTISB-5055-10	492,00	542	10
HTISB-5060-10	492,00	596	10
HTISB-5070-10	492,00	692	10
HTISB-5080-10	492,00	792	10
HTISB-5555-10	542,00	542	10
HTISB-5560-10	542,00	592	10
HTISB-5570-10	542,00	692	10
HTISB-5580-10	542,00	792	10
HTISB-6060-10	592,00	592	10
HTISB-6070-10	592,00	692	10
HTISB-6080-10	592,00	792	10
HTISB-6090-10	592,00	892	10

Technical data		Unit
Compressive strength	24° C	341 N/mm ²
	100° C	188 N/mm ²
	200° C	126 N/mm ²
	260° C	118 N/mm ²
Compressive modules	24° C	12411 N/mm ²
	218° C	19995 N/mm ²
Max. recommended service temperature		288° C
Thermal conductivity	24° C	2,7 x 10 ⁻³ W/mK
	218° C	3,0 x 10 ⁻³ W/mK
Moisture absorption		0,06 %
Specific weight		1,96 g/cm ³
Flame resistance classification in accordance with UL 94		94 V-0

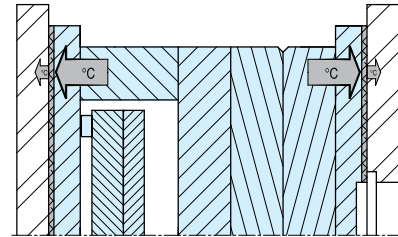
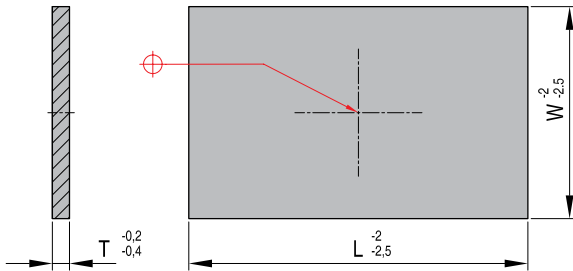
CAD reference point



R42

Insulating plates

T = 230°C
 $\lambda = 0,21 \text{ W/mK}$
 $P = 600 \text{ N/mm}^2$



REF	W	L	T
R42 96x 96-3	96	96	3,0
R42 96x 96-5	96	96	5,0
R42 100x130-3	100	130	3,0
R42 100x130-5	100	130	5,0
R42 126x126-3	126	126	3,0
R42 126x126-5	126	126	5,0
R42 126x156-3	126	156	3,0
R42 126x156-5	126	156	5,0
R42 156x156-3	156	156	3,0
R42 156x156-5	156	156	5,0
R42 156x196-3	156	196	3,0
R42 156x196-5	156	196	5,0
R42 156x246-3	156	246	3,0
R42 156x246-5	156	246	5,0
R42 156x296-5	156	296	5,0
R42 156x396-5	156	396	5,0
R42 190x246-3	190	246	3,0
R42 190x246-5	190	246	5,0
R42 190x296-5	190	296	5,0
R42 196x196-3	196	196	3,0
R42 196x196-5	196	196	5,0
R42 196x246-3	196	246	3,0
R42 196x246-5	196	246	5,0
R42 196x296-5	196	296	5,0
R42 196x296-7	196	296	7,0
R42 196x346-5	196	346	5,0
R42 196x346-7	196	346	7,0
R42 196x396-7	196	396	7,0
R42 206x156-3	206	156	3,0
R42 206x156-5	206	156	5,0
R42 206x196-3	206	196	3,0
R42 206x196-5	206	196	5,0
R42 218x246-5	218	246	5,0
R42 218x296-5	218	296	5,0
R42 218x396-7	218	396	7,0
R42 246x246-5	246	246	5,0
R42 246x246-7	246	246	7,0
R42 246x276-5	246	276	5,0
R42 246x296-5	246	296	5,0
R42 246x296-7	246	296	7,0

REF	W	L	T
R42 246x346-5	246	346	5,0
R42 246x346-7	246	346	7,0
R42 246x396-5	246	396	5,0
R42 246x396-7	246	396	7,0
R42 246x446-7	246	446	7,0
R42 246x496-8,5	246	496	8,5
R42 254x246-5	254	246	5,0
R42 254x246-7	254	246	7,0
R42 296x276-5	296	276	5,0
R42 296x276-7	296	276	7,0
R42 296x296-7	296	296	7,0
R42 296x296-8,5	296	296	8,5
R42 296x346-7	296	346	7,0
R42 296x346-8,5	296	346	8,5
R42 296x396-7	296	396	7,0
R42 296x396-8,5	296	396	8,5
R42 296x446-7	296	446	7,0
R42 296x496-8,5	296	496	8,5
R42 296x546-8,5	296	546	8,5
R42 296x596-8,5	296	596	8,5
R42 296x696-8,5	296	696	8,5
R42 346x346-7	346	346	7,0
R42 346x346-8,5	346	346	8,5
R42 346x396-7	346	396	7,0
R42 346x396-8,5	346	396	8,5
R42 346x446-8,5	346	446	8,5
R42 346x496-7	346	496	7,0
R42 346x496-8,5	346	496	8,5
R42 346x546-8,5	346	546	8,5
R42 346x596-8,5	346	596	8,5
R42 346x696-8,5	346	696	8,5
R42 346x796-8,5	346	796	8,5
R42 396x396-7	396	396	7,0
R42 396x396-8,5	396	396	8,5
R42 396x446-7	396	446	7,0
R42 396x446-8,5	396	446	8,5
R42 396x496-8,5	396	496	8,5
R42 396x546-7	396	546	7,0
R42 396x546-8,5	396	546	8,5
R42 396x596-8,5	396	596	8,5
R42 396x596-8,5	396	596	8,5
R42 396x696-8,5	396	696	8,5

REF	W	L	T
R42 396x796-8,5	396	796	8,5
R42 396x896-8,5	396	896	8,5
R42 446x446-8,5	446	446	8,5
R42 446x496-8,5	446	496	8,5
R42 446x546-8,5	446	546	8,5
R42 446x696-8,5	446	696	8,5
R42 446x796-8,5	446	796	8,5
R42 446x896-8,5	446	896	8,5
R42 496x496-8,5	496	496	8,5
R42 496x546-8,5	496	546	8,5
R42 496x696-8,5	496	696	8,5
R42 496x896-8,5	496	896	8,5
R42 496x996-8,5	496	996	8,5
R42 546x546-8,5	546	546	8,5
R42 546x596-8,5	546	596	8,5
R42 546x646-8,5	546	646	8,5
R42 546x696-8,5	546	696	8,5
R42 546x796-8,5	546	796	8,5
R42 546x896-8,5	546	896	8,5
R42 546x996-8,5	546	996	8,5
R42 596x596-8,5	596	596	8,5
R42 596x696-8,5	596	696	8,5
R42 596x796-8,5	596	796	8,5
R42 596x896-8,5	596	896	8,5
R42 596x996-8,5	596	996	8,5
R42 646x596-8,5	646	596	8,5
R42 646x696-8,5	646	696	8,5
R42 646x796-8,5	646	796	8,5
R42 646x896-8,5	646	896	8,5
R42 646x996-8,5	646	996	8,5
R42 696x696-8,5	696	696	8,5
R42 696x796-8,5	696	796	8,5
R42 696x896-8,5	696	896	8,5
R42 696x996-8,5	696	996	8,5
R42 796x796-8,5	796	796	8,5
R42 796x896-8,5	796	896	8,5
R42 796x996-8,5	796	996	8,5
R42 896x896-8,5	896	896	8,5
R42 896x996-8,5	896	996	8,5

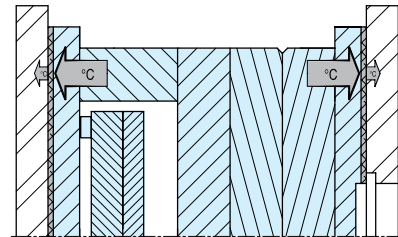
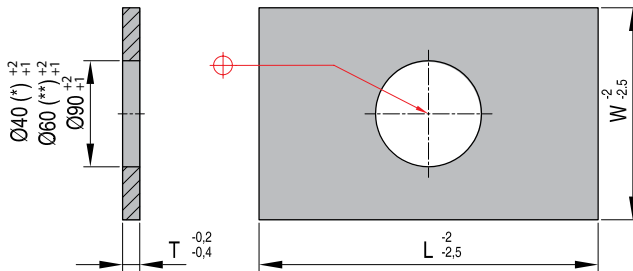
CAD reference point

Insulating plates

R43



T = 230°C
λ = 0,21 W/mK
P = 600 N/mm²



REF	W	L	T
R43 96x96-3(*)	96	96	3,0
R43 96x96-5(*)	96	96	5,0
R43 100x130-3(**)	100	130	3,0
R43 100x130-5(**)	100	130	5,0
R43 126x126-3	126	126	3,0
R43 126x126-5	126	126	5,0
R43 126x156-3	126	156	3,0
R43 126x156-5	126	156	5,0
R43 156x156-3	156	156	3,0
R43 156x156-5	156	156	5,0
R43 156x196-3	156	196	3,0
R43 156x196-5	156	196	5,0
R43 156x246-3	156	246	3,0
R43 156x246-5	156	246	5,0
R43 156x296-5	156	296	5,0
R43 156x396-5	156	396	5,0
R43 190x246-3	190	246	3,0
R43 190x246-5	190	246	5,0
R43 190x296-5	190	296	5,0
R43 196x196-3	196	196	3,0
R43 196x196-5	196	196	5,0
R43 196x246-3	196	246	3,0
R43 196x246-5	196	246	5,0
R43 196x296-5	196	296	5,0
R43 196x296-7	196	296	7,0
R43 196x346-5	196	346	5,0
R43 196x346-7	196	346	7,0
R43 196x396-7	196	396	7,0
R43 196x446-7	196	446	7,0
R43 206x156-3	206	156	3,0
R43 206x156-5	206	156	5,0
R43 206x196-3	206	196	3,0
R43 206x196-5	206	196	5,0
R43 218x246-5	218	246	5,0
R43 218x296-5	218	296	5,0
R43 218x396-7	218	396	7,0
R43 246x246-5	246	246	5,0
R43 246x246-7	246	246	7,0

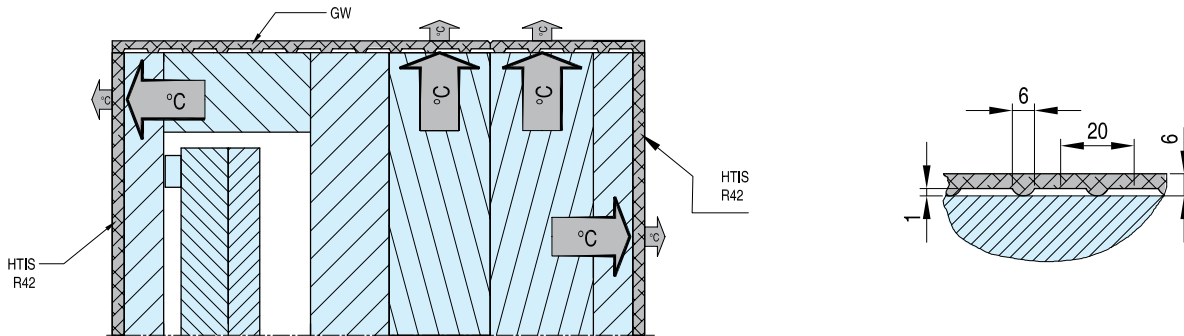
REF	W	L	T
R43 246x276-5	246	276	5,0
R43 246x296-5	246	296	5,0
R43 246x296-7	246	296	7,0
R43 246x346-5	246	346	5,0
R43 246x346-7	246	346	7,0
R43 246x396-5	246	396	5,0
R43 246x396-7	246	396	7,0
R43 246x446-7	246	446	7,0
R43 246x496-8,5	246	496	8,5
R43 254x246-5	254	246	5,0
R43 254x246-7	254	246	7,0
R43 296x276-5	296	276	5,0
R43 296x276-7	296	276	7,0
R43 296x296-7	296	296	7,0
R43 296x296-8,5	296	296	8,5
R43 296x346-7	296	346	7,0
R43 296x346-8,5	296	346	8,5
R43 296x396-7	296	396	7,0
R43 296x396-8,5	296	396	8,5
R43 296x446-7	296	446	7,0
R43 296x496-8,5	296	496	8,5
R43 296x546-8,5	296	546	8,5
R43 296x596-8,5	296	596	8,5
R43 296x696-8,5	296	696	8,5
R43 346x346-7	346	346	7,0
R43 346x346-8,5	346	346	8,5
R43 346x396-7	346	396	7,0
R43 346x396-8,5	346	396	8,5
R43 346x446-8,5	346	446	8,5
R43 346x496-7	346	496	7,0
R43 346x496-8,5	346	496	8,5
R43 346x546-8,5	346	546	8,5
R43 346x596-8,5	346	596	8,5
R43 346x696-8,5	346	696	8,5
R43 396x396-7	396	396	7,0
R43 396x396-8,5	396	396	8,5
R43 396x446-7	396	446	7,0
R43 396x446-8,5	396	446	8,5

REF	W	L	T
R43 396x496-7	396	496	7,0
R43 396x496-8,5	396	496	8,5
R43 396x546-7	396	546	7,0
R43 396x546-8,5	396	546	8,5
R43 396x596-8,5	396	596	8,5
R43 396x696-8,5	396	696	8,5
R43 446x446-8,5	446	446	8,5
R43 446x496-8,5	446	496	8,5
R43 446x546-8,5	446	546	8,5
R43 446x596-8,5	446	596	8,5
R43 446x696-8,5	446	696	8,5
R43 496x496-8,5	496	496	8,5
R43 496x546-7	496	546	7,0
R43 496x546-8,5	496	546	8,5
R43 496x596-8,5	496	596	8,5
R43 496x696-8,5	496	696	8,5
R43 546x546-8,5	546	546	8,5
R43 546x596-8,5	546	596	8,5
R43 546x646-8,5	546	646	8,5
R43 546x696-8,5	546	696	8,5
R43 596x596-8,5	596	596	8,5
R43 596x696-8,5	596	696	8,5
R43 646x596-8,5	646	596	8,5
R43 646x696-8,5	646	696	8,5
R43 646x796-8,5	646	796	8,5
R43 646x896-8,5	646	896	8,5
R43 646x996-8,5	646	996	8,5
R43 696x696-8,5	696	696	8,5
R43 696x796-8,5	696	796	8,5
R43 696x896-8,5	696	896	8,5
R43 696x996-8,5	696	996	8,5
R43 796x796-8,5	796	796	8,5
R43 796x896-8,5	796	896	8,5
R43 796x996-8,5	796	996	8,5
R43 896x896-8,5	896	896	8,5
R43 896x996-8,5	896	996	8,5

CAD reference point

GW

Corrugated thermal insulation sheet



REF	W	L	T
GW 1225 2000 06	1225	2000	6
GW 1225 1000 06	1225	1000	6

Thermal insulation sheets, unilaterally corrugated with a cross pattern, serve for covering molds on press, runnerless and tempered injection molds. Especially in the moldmaking sector an eye is kept on energy savings on a large scale. Precious thermal energy is lost by means of heat reflection and heat convection. In order to reduce these losses the corrugated thermal insulation sheet has been developed. On installation of the insulation sheet the corrugated side should always be joined to the mold. The air is trapped what leads to an even better insulation. Socket head cap screws can be placed in every position without losing heat due to the cross pattern. GW sheets are known for their compressive strength in relation to an excellent low thermal conductivity. The insulation material consists of Glassfibre and an impact resistant, thermosetting resinbonded mix.

Technical data	Unit	Single corrugated
Compressive strength	23°C	300
	200°C N/mm ²	100
Working temperature	°C	200
Thermal conductivity	W/mK	0,10
Moisture absorption	%	0,10
Specific weight	g/cm ³	1,4
Thickness	mm	6
Parallellity ground	mm/m	±0,1
Flexural strength	N/mm ²	200