

Материал	Внутренняя твердость	Обработка поверхности	Термообработка
S45C	HRC 50-55		Локальная
SKD11	HRC 60±2	HRC 60±2	Вакуумная
SKD61	HRC 36±2	HV1000±100	Азотирование
	HRC 52±2	HRC 52±2	Вакуумная

D	B	H	L с шагом 0,1 мм	SR	P	A	d		Type
							D	Допуск	
35	25	10	0~100.0	0	3	1°	12	0	BT540
		11		-0.009					
		12							
50	36	15	0~150.0	12	4	2°	20	0	
		13		-0.011					
		15	0~180.0	16	4.5	3°	20	0	
		20		-0.013					

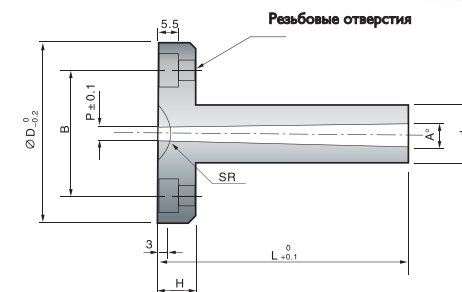
H	L с шагом 0,1 мм	SR	P	A	D	Dh6	Type
20	0~150.0	0	3.0	1°	12	0	BT541
25		11			-0.009		
30		12	3.5	2°	20	0	
20		13	4.0	3°	16	-0.011	
25		16	4.5	4°	20	0	
30		21	5.0		25	-0.013	

D	H	L с шагом 0,1 мм	SR	P	A	d	Type
25	15	0~150.0	0	3.0	1°	12	BT542
30			11	3.5		2°	
35	20		12	4.0	3°	20	
		13	4.5	4°			

Order: Type No. x D x L x Pcs
BT542 x 25 x 50 x 10

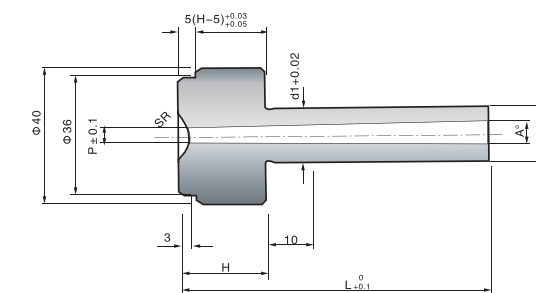
BT540

Втулка литниковая тип А



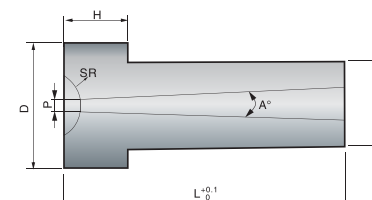
BT541

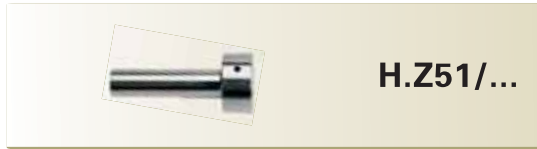
Втулка литниковая тип В



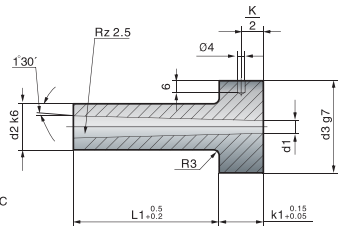
BT542

Втулка литниковая тип С





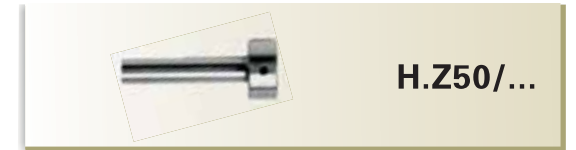
H.Z51/...



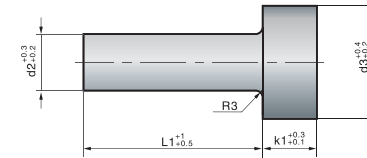
Material材质: 1.2826 Hardness硬度: 55 ± 2HRC
DIN ISO 10072(DIN 16752)

k1	d3	d2	l1	d1	Type
18	38	18	27	3.5	H.Z51/18x27x3.5
			36		36x3.5
			46		46x3.5
			56		56x3.5
			76		76x3.5
			96	96x3.5	
			27	4.5	27x3.5
			36		36x3.5
46	46x3.5				

k1	d3	d2	l1	d1	Type
18	38	18	56	4.5	H.Z51/18x56x4.5
			76		76x4.5
			96		96x4.5
			46		H.Z51/24x46x4.5
23	48	24	56	6.5	56x4.5
			76		76x4.5
			56		56x6.5
			76	76x6.5	



H.Z50/...



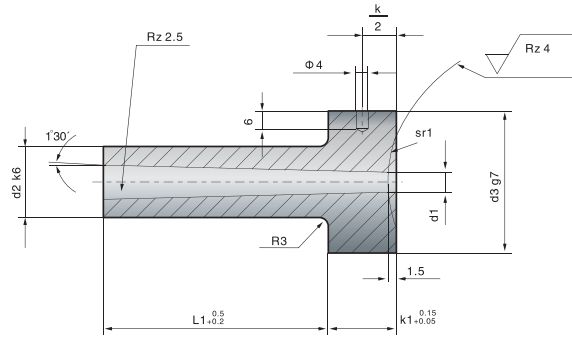
Material材质: 1.2826/740 N/mm²

k1	d3	d2	l1	Type
18	38	18	36	H.Z50/18x36
			56	56
			76	76

k1	d3	d2	l1	Type
23	48	24	56	H.Z50/24x56
			76	76
			96	96
			136	136

H.Z51/...

灌嘴
Sprue bushing

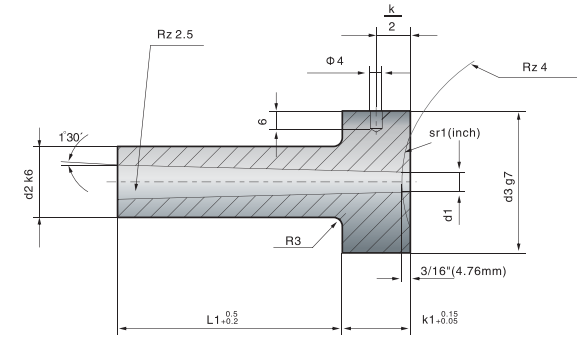


Material材质: 1.2826 Hardness硬度: 55 ± 2HRC
DIN ISO 10072(DIN 16752)

k1	d3	d2	l1	d1	sr1	Type	sr1	Type
18	38	18	27	3.5	15.5	H.Z51/18x27x3.5x15.5	40	H.Z51/18x27x3.5x40
						36		36
						46		46
						56		56
						76		76
						96		96
			27	4.5		H.Z51/18x27x4.5x15.5		H.Z51/18x27x4.5x40
						36		36
						46		46
						56		56
76	76							
96	96							
23	48	24	46	4.5	H.Z51/24x46x4.5x15.5	H.Z51/24x46x4.5x40		
					56	56		
			76	6.5	76	76		
					H.Z51/24x56x6.5x15.5	H.Z51/24x56x6.5x40		
			76	76				

H.Z51/...

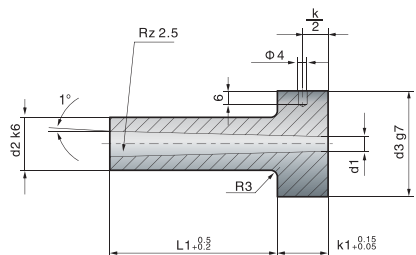
灌嘴
Sprue bushing



Material材质: 1.2826 Hardness硬度: 55 ± 2HRC
DIN ISO 10072(DIN 16752)

k1	d3	d2	l1	d1	sr1	Type	sr1	Type
18	38	18	27	3.5	1/2	H.Z51/18x27x3.5x1/2	3/4	H.Z51/18x27x3.5x3/4
				4.5		4.5		
			36	3.5		36x3.5		36x3.5
				4.5		4.5		
			46	3.5		46x3.5		46x3.5
				4.5		4.5		
			56	3.5		56x3.5		56x3.5
				4.5		4.5		
			66	4.5		66x4.5		66x4.5
				4.5		76x4.5		76x4.5
23	48	24	46	4.5	H.Z51/24x46x4.5x1/2	3/4	H.Z51/24x46x4.5x3/4	
				6.5	56x4.5		56x4.5	
			66	4.5	66x4.5		66x4.5	
				6.5	6.5			
			76	4.5	76x4.5		76x4.5	
76	6.5	6.5						

H.Z511/...

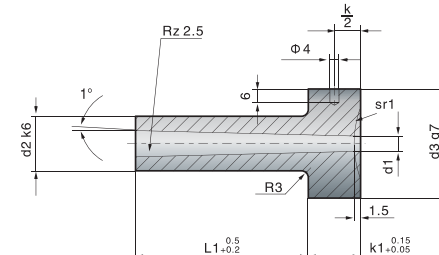


Material材质: 1.2826 Hardness硬度: 55 ± 2HRC
DIN ISO 10072(DIN 16752)

k1	d3	d2	l1	d1	Type		
13	28	12	22	2.5	H.Z511/12x22x2.5		
					27		
					36		
					46		
					22	3.5	H.Z511/12x22x3.5
					27		
					36		
					46		
56							
23	48	24	27	3	H.Z511/18x27x3		
			36				
			46				
18	38	18	56	3	H.Z511/18x56x3		
			66				
			76				
			86				
			96				
			116				
			27	4	H.Z511/18x27x4		
			36				
			46				
			56				
			66				
			76				
			86				
			96				
			116				

Order: Type No. x Pcs
H.Z511/12x22x2.5 x 10

H.Z511/...

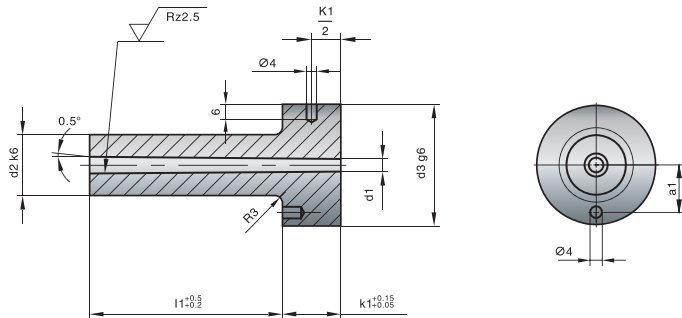


Material材质: 1.2826 Hardness硬度: 55 ± 2HRC
DIN ISO 10072(DIN 16752)

k1	d3	d2	l1	d1	sr1	Type	sr1	Type			
13	28	12	22	2.5	15.5	H.Z511/12x22x2.5x15.5	40	H.Z511/12x22x2.5x40			
						27		27			
						36		36			
						46		46			
						22		3.5	H.Z511/12x22x3.5x15.5	40	H.Z511/12x22x3.5x40
						27					
						36					
						46					
56											
18	38	18	27	3	15.5	H.Z511/18x27x3ssx15.5	40	H.Z511/18x27x3ssx40			
			36								
			46								
			56								
			66								
			76								
			86								
			96								
			116								
			27			4		H.Z511/18x27x4ssx15.5	40	H.Z511/18x27x4ssx40	
			36								
			46								
			56								
			66								
			76								
86											
96											
116											

Order: Type No. x Pcs
H.Z511/12x22x2.5x15.5 x 10

H.Z512/...

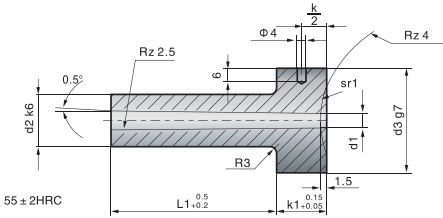


Material材质: 1.2826 Hardness硬度: 55 ± 2HRC
DIN ISO 10072(DIN 16752)

k1	a1	d3	d2	l1	d1	Type
13	11	28	12	27	2.5	H.Z512/12x27x2.5
				36		36
				46		46
				56		56
				36		3.5
				46	46	
				56	56	
				66	66	
				76	76	
				18	15	38
56	56					
66	66					
76	76					
86	86					
96	96					
56	4	H.Z512/18x56x4				
66		66				
76		76				
86		86				
96		96				
116		116				

Order: Type No. x Pcs
H.Z512/12x27x2.5 x 10

H.Z512/...



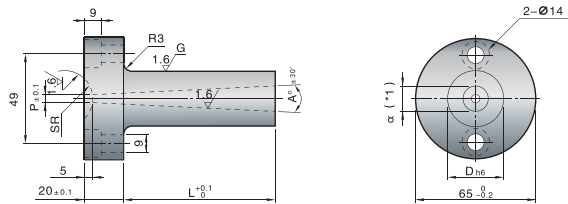
Material材质: 1.2826 Hardness硬度: 55 ± 2HRC
DIN ISO 10072(DIN 16752)

k1	d3	d2	l1	d1	sr1	Type				
13	28	12	27	2.5	15.5	H.Z512/12x27x2.5x15.5				
			36			36				
			46			46				
			56			56				
			36			3.5	H.Z512/12x36x3.5x15.5			
			46	46						
			56	56						
			66	66						
			76	76						
			18	38		18	27	2.5	40	H.Z512/12x27x2.5x40
36	36									
46	46									
56	56									
36	3.5	H.Z512/12x36x3.5x40								
46		46								
56		56								
66		66								
76		76								
18	38	18			46		3	15.5		H.Z512/18x46x3x15.5
					56					56
					66					66
					76					76
					86					86
			96	96						
			56	4	H.Z512/18x56x4x15.5					
			66		66					
			76		76					
			86		86					
			96		96					
			116		116					
			46		3	H.Z512/18x46x3x40				
			56			56				
66	66									
76	76									
86	86									
18	38	18	96	4	40	H.Z512/18x56x4x40				
			56			56				
			66			66				
			76			76				
			86			86				
			96	96						
			116	116						

Order: Type No. x Pcs
H.Z512/12x27x2.5x15.5 x 10

M.SBBR

浇口套
Gate Sleeve



百通标准

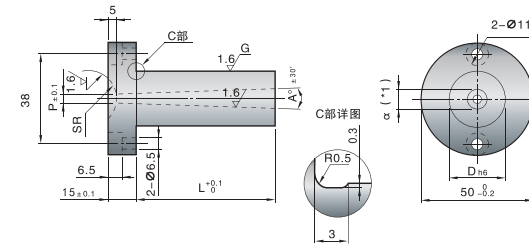
Material材质: HPM1
Hardness硬度: 37-43HRC

L 指定单位 0.1mm	SR	P	A° 指定单位 0.5°	V 指定单位 0.1MM	G° 指定单位 1°	D h6		D	Type
30.0~200.0	0	3	2~4	D > V ≥ α+2	1~10	20	0 -0.013	20	M.SBBR
	10.5	3.5							
	11	4							
	12	4.5							
	13	5				25	25		
	16	5.5							
	20	6							
	21	6.5				30	30		
	23	7							
		8							

Order: Type No. - L - SR - P - A - V - G x Pcs
M.SBBR 25 - 150.3 - Sr11 - P3 - A2 x 10

M.SBBT

浇口套
Gate Sleeve



百通标准

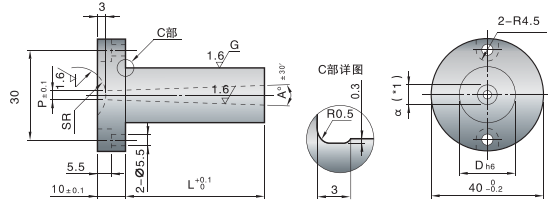
Material材质: SKD61
Hardness硬度: 48-52HRC

L 指定单位 0.1mm	SR	P	A° 指定单位 0.5°	V 指定单位 0.1MM	G° 指定单位 1°	D h6		D	Type
30.0~150.0	0	2	1~4(*3)	D > V ≥ α+2	1~10	16	0 -0.011	16	M.SBBT
	10.5	2.5							
	11	3							
	12	3.5							
	13	4				20	20		
	16	4.5							
	20	5							
	21	5.5				25	25		
	23	6							
		6.5							
	7								
	8								

Order: Type No. - L - SR - P - A - V - G x Pcs
M.SBBT 25 - 35.0 - Sr11 - P3 - A2 x 10

M.SBBK

浇口套
Gate Sleeve



百通标准

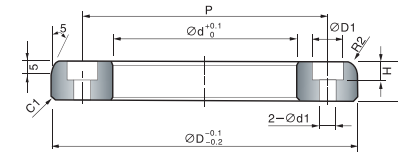
Material材质: SKD61
Hardness硬度: 48-52HRC

L 指定单位 0.1mm	SR	P	A° 指定单位 0.5°	V 指定单位 0.1MM	G° 指定单位 1°	D h6		D	Type
0-80.0	0 10.5 11	2 2.5 3 3.5	0.5-3[*3]	D > V ≥ α + 2	1-10	8	0 0.009	8(*5)	M.SBBK
0-120.0	0 10.5 11 12 13 16 20[*4]	2[*3.4] 2.8[*3] 3[*3]	0.5-4[*3]			10	0 -0.011	10	
0-150.0		3.5				12		12	
		4				13		13	
		4.5				16		16	
		5				20		20	
		5.5							
		6							
		6.5							
		7							
8									

Order: Type No. - L - SR - P - A - V - G x [Pcs]
M.SBBK 20 - 85.0 - SR16 - P2.5 - A2 x 10

BT549

固定圈A型
Locating rings A type



百通标准

Material材质: S45 Hardness硬度: 30° 热处理: 淬火处理

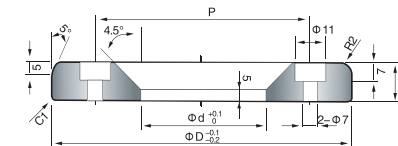
d	d1	D1	H	H1	P	D	Type
36	4.5	7.3	4.5	15/20/25	48	60	BT549
70	7	11	7		85	100	
80					95	110	
90					105	120	
110	9.5	15	9		130	150	

Order: Type No. x [D] x [Pcs]
BT549 x 60 x 10



BT550

固定圈B型
Locating rings B type



百通标准

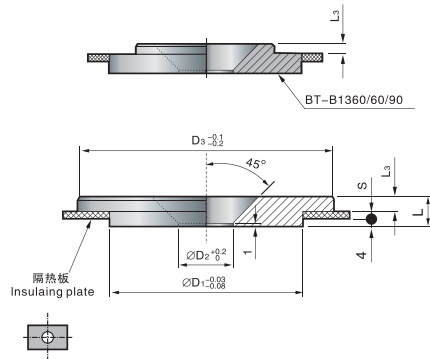
Material材质: S45 Hardness硬度: 30° 热处理: 淬火处理

d	P	D	Type
36	85	100	BT550
50		120	
36	85	120	
50			

Order: Type No. x [D] x [Pcs]
BT550 x 100 x 10

BT-B1360

定位圈
Locating rings



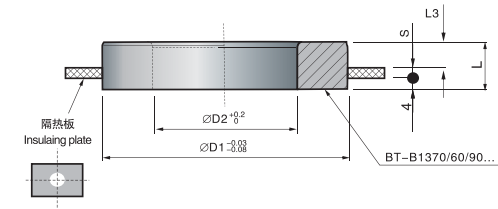
百通标准
Material材质: S45C

L3	D2	S	D3	D1	L	Type
4	26	-	60	60	8	BT-B1360
		6			14	
8	36	-	90	60	12	
		6			18	
4	26	-	60	90	8	
		6			14	
8	36	-	90	90	12	
		6			18	
		-	100		12	
		6			18	
		-	110		12	
		6			18	
		8	120		20	
		-			12	
		6	125		18	
		8			20	
		-	160		12	
		6			18	
		8	175		20	
		-			12	
		6	20		18	
		8			20	

Order: Type No. x D1 x L x Pcs
BT-B1360 x 60 x 8 x 10

BT-B1370

定位圈
Locating rings



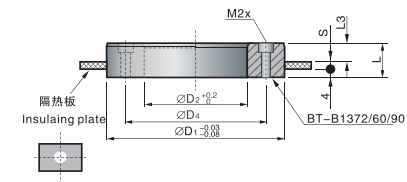
百通标准
Material材质: S45C

D2	L3	S	D1	L	Type
82	8	-	125	12	BT-B1370
		6		18	
		8		20	
120	10	-	160	14	
		6		20	
		8		22	
		-	200	14	
		8		22	
		-		250	
8	22				

Order: Type No. x D1 x L x Pcs
BT-B1370 x 125 x 12 x 10

BT-B1372

定位圈
Locating rings



百通标准
Material材质: S45C

D2	D4	L3	S	M	D1	L	Type
82	104	8	-	M5	125	12	BT-B1372
			6			18	
			8			20	
120	144	10	-		160	14	
			6			20	
			8			22	
			-		200	14	
			8			22	
			-			250	
8	22						

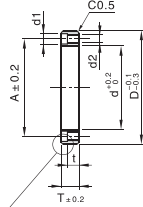
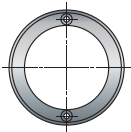
Order: Type No. x D1 x L x Pcs
BT-B1372 x 125 x 12 x 10

M.LRBF

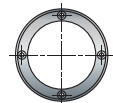
定位圈
Locating rings



M.LRBS螺栓型用-2孔



M.LRBF螺栓型用-4孔



S45C

百通标准

Material材质: S45C

适用 螺栓	螺栓孔		t	d	A	T	D	Type			
	d2	d1									
M5	5.5	9	5	40	50	10	60				
						15					
						20					
						25					
M6	6.5	11	3	70	85	10	100	M.LRBS-2孔			
						15					
						20					
						25					
			8	80	95	10	110		15	110	M.LRBF-4孔
						20					
						25*					
						30					
			3	90	105	10	120		15	120	
						20					
						25					
						30					
M8	9	14	6	110	130	15	150				
						20					
						25					
						30					

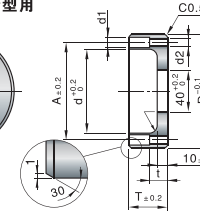
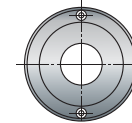
Order: Type No. - T x Pcs
M.LRBS/LRBF120 - 10 x 10

M.LRBD

定位圈
Locating rings



M.LRBD螺栓型用



百通标准

Material材质: S45C

适用 螺栓	螺栓孔		t	R	d	A	T	D	Type	
	d2	d1								
M6	6.5	11	9	5	70	85	15	100	M.LRBD	
							20			
							35			
							40			
			20	10	90	105	15	120		20
							35			
							40			
							45			

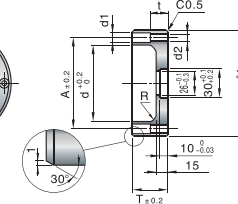
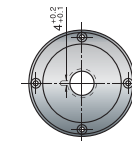
Order: Type No. - T x Pcs
M.LRBD100 - 15 x 10



M.LRSD

定位圈
Locating rings

M.LRSD 带肩型用



百通标准

Material材质: S45C

适用 螺栓	螺栓孔		t	R	d	A	T	D	Type
	d2	d1							
M6	6.5	11	20	10	70	85	35	100	M.LRSD
							40		
							45		
							45		
90	105	35	120	45					

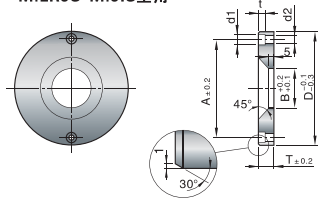
Order: Type No. - T x Pcs
M.LRSD100 - 35 x 10

M.LRJS

定位圈
Locating rings



M.LRJS M.JIS型用



百通标准

Material材质: S45C

适用螺栓	螺栓孔			A	B			T	D	Type
	d2	d1	t							
M6	6.5	11	6.5	8.5	35	40	50	15	100	M.LRJS
					35	40		25		
					35	40	50	15		
M8	9	14	8.6	100	40	50	15	120		
					35	40	50	20		
					35	40	50	20		

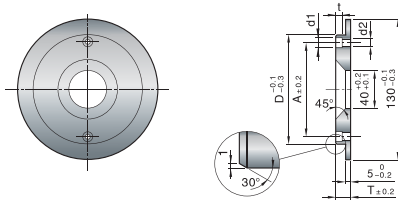
Order: Type No. - T - B x [Pcs]
M.LRJS100 - 15 - 35 x 10

M.LRST

定位圈
Locating rings



M.LRST 拉料销压紧型



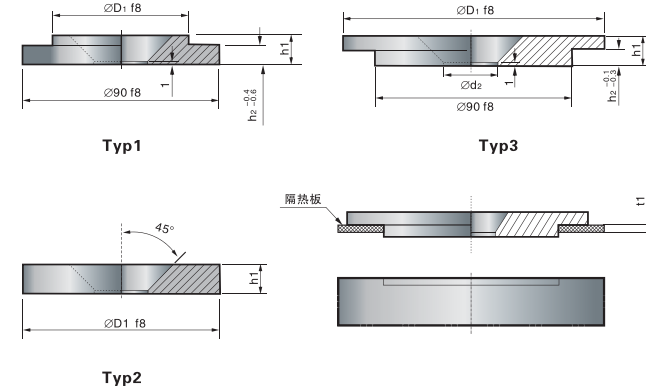
百通标准

Material材质: S45C

适用螺栓	螺栓孔		D1	d	A	D	Type
	d2	d1					
M6	6.5	11	130	85	115	100	M.LRST
			150	105	135	120	

H.K100

定位圈
Locating rings



百通标准

Material材质: S45C

h ₂	D ₂	Typ	D ₁	h ₁	Type
4		1	60	8	H.K100
			80		
			90		
-		2	100		
4	36	3	110	12	
			120	8	
				12	
			125	8	
				12	
			130	12	
			140	8	
			150	12	
			160	8	
				12	
			175	8	
			180	12	
			200		
			250		

Order: Type No. x [Pcs]
H.K100 x 10

D.MRS

流道转向阀
Passage steering control valve

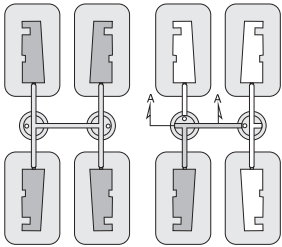


流道转向开关-应用说明

流道转向开关提供了一种精确的方法，将物料封堵或引导至多型腔模或者多腔模的一个或多个腔里

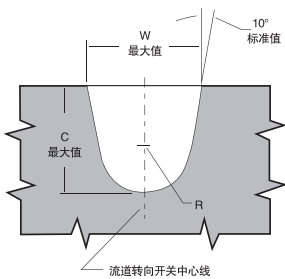
- 比使用黄铜针或者顶针更安全，更合理。
- 节省材料
- 减少废料和料分选时间
- 改善生产周期

如背景图所示，流道转向开关供货时未经加工，前景图显示样品流道加工情况，标准做法是将键件安装在模具后完成加工。



上面流道转向开关显示在开启位置，可以让材料流向所有型腔。

如上所示，用黄铜锥的起子端装流道转向开关的中心芯旋转90° 或者180°，可以关闭流向某一个或多个型腔的物料流。

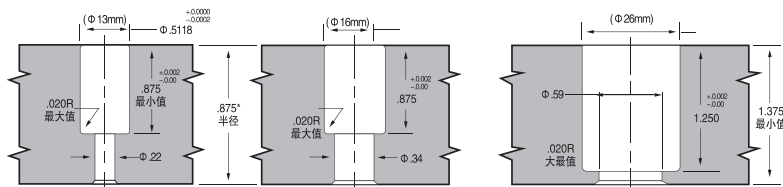


流道转向开关-加工说明

加工流道转向开关安装穴的尺寸

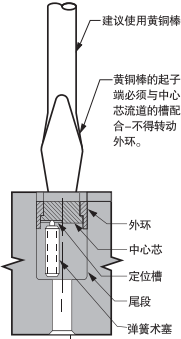
安装穴为典型的软钢锥孔，夹具为淬火钢打磨。

按照说明，保持公差压配合，配合太松会使开关移位，而压配合太紧则可能在中心芯需要转动时受阻。



典型应用情况

关闭一个或者多个型腔的流道



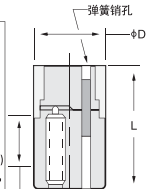
注：弹簧柱要在流道转向开关里与中心芯中的定位槽吻合。这使中心芯在每旋转90° 时保持在适当的位置，因此可以提供流道关闭位置的几组。

流道转向开关

图例：

C=流道深度
D=直径
L=长度
R=半径
W=流道宽度
材料：不锈钢
硬度：50±3洛氏硬度C
最高温度：120°C (250°F)
尺寸：所有尺寸单位为英寸，除非另外注明

※仅测量该区的。开关的顶端和底部有一个非常微小的突起，便于正确安装与操作。



流道加工尺寸

D	L (长度)	W 最大值	C 最大值	R 半径	等直效径	面积平方英寸	Type
.5118 (13mm)	.855 (22.5mm)	.099	.091	.040	.095	.007	D.MRS 0013/CN
		.126	.120	.050	.123	.012	
.6299 (16mm)	.885 (22.5mm)	.150	.131	.062	.141	.016	D.MRS 0016/CN
		.186	.157	.078	.172	.023	
		.206	.175	.086	.191	.029	
		.260	.218	.109	.239	.045	
1.0236 (26mm)	1.260 (32mm)	.298	.250	.125	.274	.059	D.MRS 0026/CN
		.334	.281	.140	.308	.074	
		.372	.312	.156	.342	.092	
		.410	.343	.172	.377	.112	
		.446	.375	.187	.411	.133	

注：所有流道应该沿流道转向开关中间线半与中心线成90° 进行加工。如果不这样进行加工，流道在旋转90° 或180° 关闭流向某个型腔的物料流时将不能严密地对准。所有流道的加工应该在流道转向开关安装到模具里后再进行。

Order: Type No. x Pcs
D.MRS 0013/CN x 10

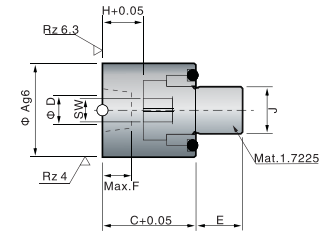
百通标准

百通标准

Mat.:INOX.1.4034-Hard.48±2HRC
Maximum working temperature 100°C

A	C	D	E	F	H	J	SW	Type
12	14	4	6	3	5	M6	3	C.SA.120014
16	16	5	8	5	7	M8	4	C.SA.160016
20	18	6	10	6	9	M10	5	C.SA.200018

Order: Type No. x Pcs
C.SA.120014 x 10

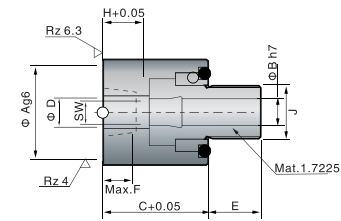


百通标准

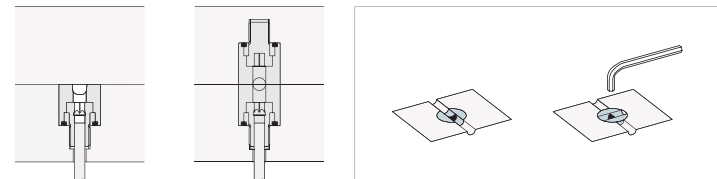
Mat.:INOX.1.4034-Hard.48±2HRC
Maximum working temperature 100°C

A	B	C	D	E	F	H	J	SW	Type
12	3	14	4	6	3	5	M6	3	C.SA.120314
16	4	16	5	8	5	7	M8	4	C.SA.160416
20	5	18	6	10	6	9	M10	5	C.SA.200518

Order: Type No. x Pcs
C.SA.120314 x 10



Example 使用例

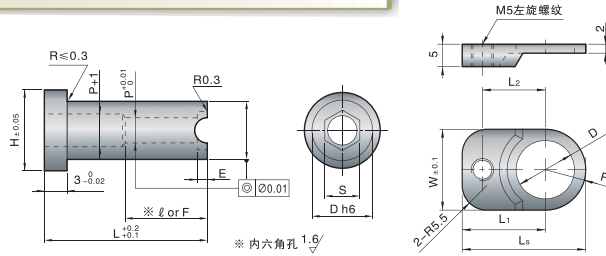


M.RFAN M.RFAL

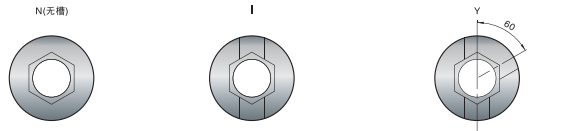
流量调整套销
Runner Pin



Shape1 正面形状

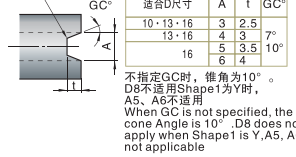


Shape1 正面形状



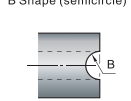
Shape2 流道槽形状

A形状(梯形)
A shape (trapezoid)
R0.5



不指定GC时, 锥角为10°。
D8不适用Shape1为Y时,
A5, A6不适用
When GC is not specified, the
cone Angle is 10°. D8 does not
apply when Shape1 is Y, A5, A6
not applicable

B形状(半圆)
B Shape (semicircle)

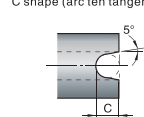


B尺寸选择

适合D尺寸	B
8 · 10 · 13 · 16	1 1.25 1.5
10 · 13 · 16	2 2.25 2.5
13 · 16	3 3.5 4

Shape1为Y时, B3-B4不适用
When Shape1 is Y, B3-B4 is not applicable

C形状(圆弧十切线)
C shape (arc ten tangent)



C尺寸选择

适合D尺寸	C
8 · 10 · 13 · 16	2 2.5
10 · 13 · 16	3 3.5
13 · 16	4

Shape1为Y时, C3.5, C4不适用
When Shape1 is Y, C3.5 and C4 are
not applicable

百通标准

Material材质: SKH61
Hardness硬度: 40-45HRC

挡块				H	E	S	Shape1	Shape2			L	e 或 F		P	D	Type
W	Ls	L1	L2					A形状	B形状	C形状		RFAN e	RFAL F			
13	22	15.5	11	12.5	3	4	N	不可指定	1 1.25 1.5	2	RFAN L尺寸固定型 20 25 30 35 40 50 RFAL L尺寸指定型 指定单:位0.1mm 15.0-50.0	14	8-30	3	8	M.RFAN (L尺寸固定) M.RFAL (L尺寸指定)
15	24	16.5	12	14.5				3	5	3	1 1.25 1.5 1.75 2	2 2.5	20.0-60.0	15	10-30	
18	27.5	18.5	14	17.5	4	6	N	1 1.25 1.5 1.75 2	2 2.5 3	RFAN L尺寸固定型 20 25 30 35 40 50 60 RFAL L尺寸指定型 指定单:位0.1mm 20.0-60.0	16	10-30	5	13	M.RFAN (L尺寸固定) M.RFAL (L尺寸指定)	
								3 4	2 2.5 3	RFAN L尺寸固定型 25 30 35 40 50 60 RFAL L尺寸指定型 指定单:位0.1mm 20.0-60.0	20	6	6	16		
21	30	19.5	15	20.5	5	10	Y*	1 1.25 1.5 1.75 2	2 2.5 3	RFAN L尺寸固定型 30 35 40 50 60 RFAL L尺寸指定型 指定单:位0.1mm 20.0-60.0	22	12-30	8	16		
								3 4 (5) (6)	2 2.5 3 (3.5) (4)							

Order: Type No. - Shape1 - Shape2 - L - F - P x [Pcs]
M.RFAN 13 - I - C2.5 - 30 - P5 x 10
M.RFAL 13 - I - C2.5 - 31.2 - F20 - P3 x 10

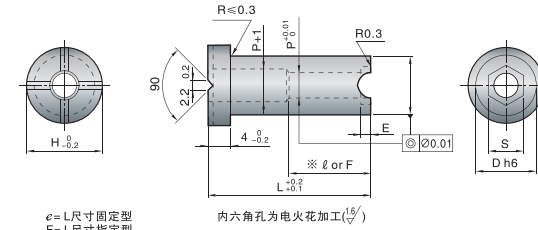
M.RCPNZ M.RCPLZ

浇口紧锁套
Gate lock



Shape1 正面形状

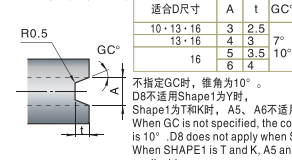
(柱塞定位槽与流道槽的方向相同。)



e = L尺寸固定型
F = L尺寸指定型

Shape2 流道槽形状

A形状(梯形)
A shape (trapezoid)



不指定GC时, 锥角为10°。
D8不适用Shape1为Y时,
Shape1为T和K时, A5, A6不适用
When GC is not specified, the cone Angle
is 10°. D8 does not apply when Shape1 is Y,
When SHAPE1 is T and K, A5 and A6 are not
applicable

B形状(半圆)
B Shape (semicircle)

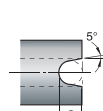


B尺寸选择

适合D尺寸	B
8 · 10 · 13 · 16	1 1.25 1.5
10 · 13 · 16	2 2.25 2.5
13 · 16	3 3.5 4

Shape1为T和K时,
B3-4不适用
When Shape1 is
T and K, B3-4
discomfort

C形状(圆弧十切线)
C shape (arc ten tangent)



C尺寸选择

适合D尺寸	C
8 · 10 · 13 · 16	2 2.5
10 · 13 · 16	3 3.5
13 · 16	4

Shape1为T和K时, C3.5, C4不适用
When SHAPE1 is T and K, C3.5, C4 is
not applicable

百通标准

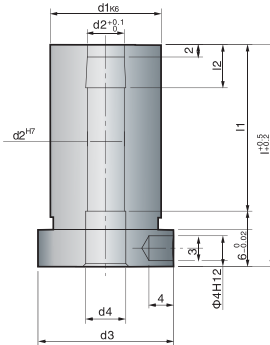
Material 材质: SKH61
Hardness 硬度: 40-45HRC

适用柱塞	H	E	S	Shape1	Shape2			L	e 或 F		P	D	Type
					A形状	B形状	C形状		RCPNZ e	RCPLZ F			
BPJ4 BSJ4	14	3	4	N	-	1 1.25 1.5	2	RCPNZ L尺寸固定型 20 25 30 35 40 50 RCPLZ L尺寸指定型 指定单:位0.1mm 15.0-50.0	14	7-30	3	8	M.RCPNZ (L尺寸固定) M.RCPLZ (L尺寸指定)
	16				3	5	3	1 1.25 1.5 1.75 2 2.25 2.5	2 2.5	15	4	10	
BPJ5 BSJ5	19	4	6	N	3	1 1.25 1.5 1.75 2 2.25 2.5 (3)	2 2.5 3	RCPNZ L尺寸固定型 20 25 30 35 40 50 60 RCPLZ L尺寸指定型 指定单:位0.1mm 20.0-60.0	16	7-30	5	13	M.RCPNZ (L尺寸固定) M.RCPLZ (L尺寸指定)
					4	1 1.25 1.5 1.75 2 2.25 2.5 (3)	2 2.5 3	RCPNZ L尺寸固定型 25 30 35 40 50 60 RCPLZ L尺寸指定型 指定单:位0.1mm 20.0-60.0	20	6	6	16	
	22	5	10	L	3	1 1.25 1.5 1.75 2 2.25 2.5 (3) (3.5) (4)	2 2.5 3 (3.5) (4)	RCPNZ L尺寸固定型 30 35 40 50 60 RCPLZ L尺寸指定型 指定单:位0.1mm 20.0-60.0	22	7-30	8	16	
					4 (5) (6)	2 2.5 3 (3.5) (4)							

Order: Type No. - Shape1 - Shape2 - L - F - P x [Pcs]
M.RCPNZ 13 - I - C2.5 - 30 - P5 x 10
M.RCPLZ 13 - I - C2.5 - 30 - F20 - P6 x 10

RB

拉料销衬套
Pull Pin bushing



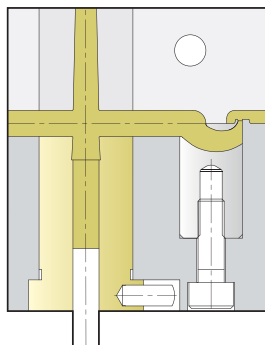
百通标准

Hardness硬度: 2826-58 HRC

l	l1	l2	d1	d2	d3	d4	Type
36	36	7	12	4	16	4.5	RB4-36
46	46						RB4-46
56	56						RB4-56
36	36	7	18	6	22	6.5	RB6-36
46	46						RB6-46
56	56						RB6-56
66	66	9.5	24	8	28	8.5	RB8-46
46	46						RB8-56
56	56						RB8-66

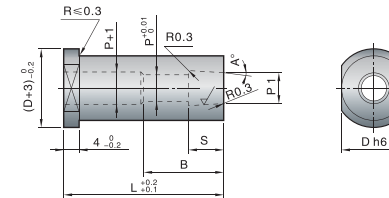
Order: x
RB4-36 x 10

Example
使用例



M.SLBH

浇口紧锁套
Gate lock



百通标准

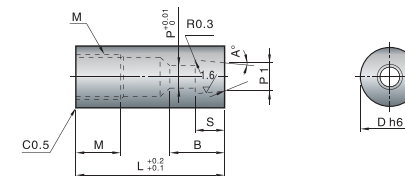
Material 材质: SKH61
Hardness 硬度: 48-52HRC

L	P	S 指定单位0.1mm	A°	P1	B	D	Type
20 25 30 35 40	3	3.0-7.0	0	3.5	12	8	M.SLBH
	4	3.0-8.0	1	4.6	13	10	
20 25 30 35 40 50	5	3.0-9.0	2	5.8	14	13	
	6	3.0-10.0	3	6.8	18		
25 30 35 40 50	8	3.0-12.0	4	9	20	16	

Order: - - - - - x
M.SLBH 10 - 40 - P4 - S3.0 - B13 - A2 x 10

M.SLBS

浇口紧锁套
Gate lock



百通标准

Material 材质: SKH61
Hardness 硬度: 48-52HRC

L	P	S 指定单位0.1mm	A°	P1	B	D	Type
25	3	3.0-7.0	0	3.5	12	8	M.SLBS
	4	3.0-8.0	1	4.6	13	10	
30	5	3.0-9.0	2	5.8	14	12	
	6	3.0-10.0	3	6.8	18	12	
40	8	3.0-12.0	4	9	20	16	

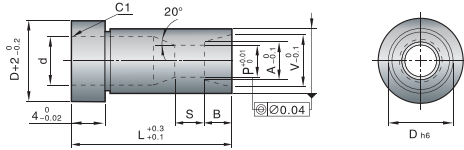
Order: - - - - - x
M.SLBS 10 - 25 - P4 - S6.2 - 13 - A2 x 10

M.RLBST

拉料销衬套
Pull Pin bushing



直杆拉料销用带锥面加工
Straight rod drawing pin
with a cone processing



百通标准

Material材质: SKD11
Hardness硬度: 60-63HRC

适用内六角螺塞	D	d	S	B	L	指定单位0.5mm		P	Type
						A	V		
MSWA10	5	2.5	6	2	15 20 25	P < A ≤ V 且 A ≤ D - 1.5	A ≤ V ≤ D - 1.0	2	M.RLBST
					10 15 20 25			3	
MSWA12	8	4.5	8	2.5	15 20 25			4	
				3	5				
MSWA16	10	6.5	8	4	15 20 25 30			6	
MSWA18	13	8.5			8				

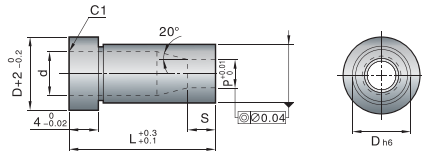
Order: Type No. - L - A - V x Pcs
M.RLBST 8 - 20 - A9.0 - V11.0 x 10

M.RLBS

拉料销衬套
Pull Pin bushing



直杆拉料销用
Straight rod pulling pin



百通标准

Material材质: SKD11
Hardness硬度: 60-63HRC

适用内六角螺塞	D	d	S	L	P	Type
MSWA10	6	3.5	6	10 15	3	M.RLBS
MSWA12	8	4.5		10 15 25	4	
		5.5	10	5		
MSWA16	10	6.5	8	15 20 25 30	6	
MSWA18	13	8.5		25	8	
MSWA20	15	10.5	25 30	10		

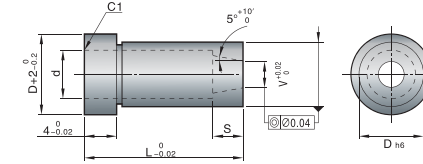
Order: Type No. - L - A - V x Pcs
M.RLBS 8 - 25 x 10

M.RLBT

拉料销衬套
Pull Pin bushing



锥度拉料销用
Taper pulling material for pin



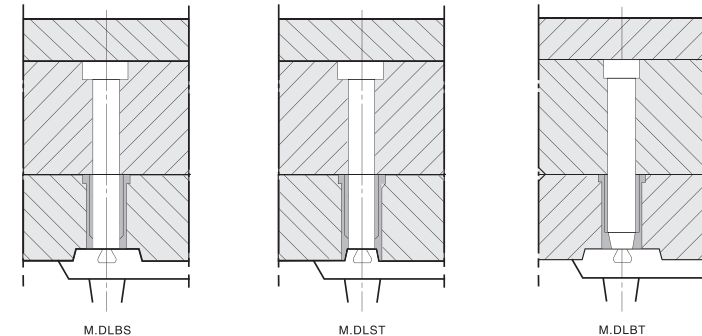
百通标准

Material材质: SKD11
Hardness硬度: 60-63HRC

适用内六角螺塞	D	d	S	V	L	NO	Type
MSWA12	8	4.5	4	3.0	15 20 25	4	M.RLBT
		5.5	5	3.5	10 15 20 25	5	
MSWA16	10	6.5	7	4.0	15 20 25	6	

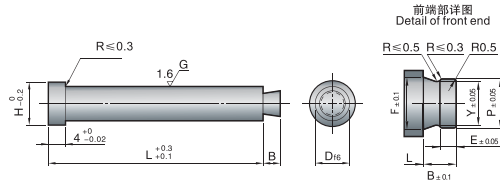
Order: Type No. - L x Pcs
M.RLBT 4 - 15 x 10

Example
使用例



M.RLH

拉料销
Runner lock pins



百通标准

Material材质: SKH51
Hardness硬度: 58-60HRC

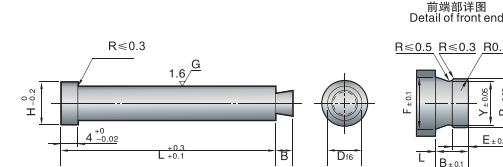
D	H	B	P	E	Y	F	L											Type			
							L15	L20	L25	L30	L35	L40	L45	L50	L60	L70	L80				
2	4	2	1.5	1	1	1.7															M.RLH
3	5	2.3	1.8		2.5																
4	6	2.5	2.8		3	-															
5	7	3	3.3	1.5	2.8	3.5	-														
6	8	3.8	3		4	-	-	-													
8	10	4	5.8	2	5	6	-	-	-												

Order: Type No. - L x Pcs
M.RLH 6 - 70 x 10

M.RLHB

M.RLHG

拉料销
Runner lock pins



百通标准

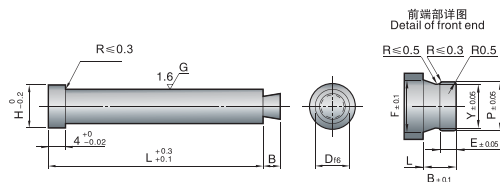
Material材质: SKH51
Hardness硬度: 58-60HRC

D	H		B	N	指定单位0.1mm			Type
	M.RLHB	M.RLHG			L	P	Y	
2	4	4	2	1	10.0-100.0	1.3-1.9	0.8-1.4	M.RLHB M.RLHG
3	5	6				1.3-2.9	0.8-2.4	
4	6	7	2.5	1.5-3.9		1-3.4		
5	7	8	3	1.7-4.9		1.2-4.4		
6	8	9	4	2	2-5.9	1.5-5.4		
8	10	11			2.5-7.9	2-7.4		
10	13	15	5	2.5	15.0-100.0	3.0-9.9	2.5-9.4	

Order: Type No. - L - P - Y - F x Pcs
M.RLHG 4 - 37.5 - P2.8 - Y2.3 - F3.0 x 10

M.RLHL

拉料销
Runner lock pins



百通标准

Material材质: SKH51
Hardness硬度: 58-60HRC

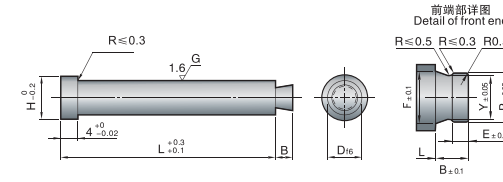
D	L	H	B	P	E	Y	F	Type
2	10.0-100	4	2	1.5	1	1	1.7	M.RLHL
3		5		2.3		1.8	2.5	
4		6	2.5	2.8		2.3	3	
5	15.0-150	7	3	3.3	1.5	2.8	3.5	
6		8		3.8		3	4	
8	10	4	5.8	2	5	6		

Order: Type No. - L - P - Y - F x Pcs
M.RLHL 4 - 37.5 - P2.8 - Y2.3 - F3.0 x 10

M.RLHBF

M.RLHGF

拉料销
Runner lock pins



百通标准

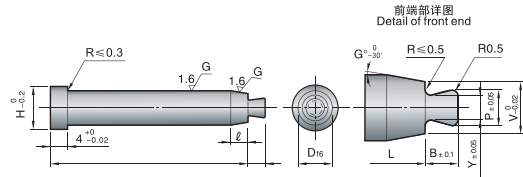
Material材质: SKH51
Hardness硬度: 58-60HRC

D	H		L	指定单位0.1mm		E	B	B-e min	Type
	M.RLHBF	M.RLHGF		P	Y				
2	4	4	10.0-100	1.3-1.9	0.8-1.4	0.5-1.5	1.5-3	1	M.RLHBF M.RLHGF
3	6	6		1.3-2.9	0.8-2.4				
4	5	7		1.5-3.9	1-3.4				
5	7	8	1.7-4.9	1.2-4.4	1.5		1.8-3.8		
6	8	9	2-5.9	1.5-5.4		0.8-2.3	2.3-4.5		
8	10	11	15.0-150	2.5-7.9	2-7.4	1-3	3-6	2	
10	13	15		3-9.9	2.5-9.4	1.3-3.8	3.8-7.5	2.5	

Order: Type No. - L - P - Y - F - B - E x Pcs
M.RLHGF 4 - 37.5 - P2.8 - Y2.3 - F3.0 - B3.0 - E1.0 x 10

M.RLTBF M.RLTGF

拉料销
Runner lock pins



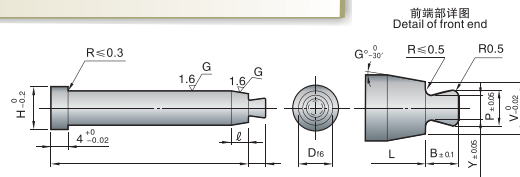
百通标准
Material材质: SKH51
Hardness 硬度: 58-60HRC

D	H	指定单位0.1mm				L	G°	Type
		P	Y	B	V			
3	5	0.9-2.1	0.8-2	0.8-3	2.5-2.9	20-100	5-10	M.RLTBF M.RLTGF
4	6	1.1-2.4	1-2.3	1.3-3.8	3-3.9			
5	7	1.3-2.8	1.2-2.7	1.5-4.5	3.5-4.9	25-150	5-10	M.RLTBF M.RLTGF
6	8	1.6-3.3	1.5-3.2	2-6	4-5.9			
8	10	2.1-5.2	2-5.1	2.5-7.5	6-7.9			
10	13	2.6-7	2.5-6.9	7-9.9				

Order: Type No. - L - P - Y - B - V - G x Pcs
M.RLTGF 5 - 50.2 - P1.5 - Y1.2 - B2.0 - V3.0 - G5 x 10

M.RLTB M.RLTG

拉料销
Runner lock pins



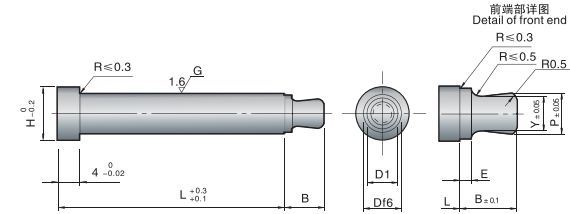
百通标准
Material材质: SKH51
Hardness 硬度: 58-60HRC

D	H		B	G°	V	指定单位0.1mm			Type
	M.RLTB	M.RLTG				P	Y	L	
3	5	-	2	5	2.5	0.9-2.1	0.8-2	20.0~100.0	M.RLTB M.RLTG
4	6	7	2.5		3	1.1-2.4	1-2.3		
5	7	8	3	3.5	1.3-2.8	1.2-2.7	25.0~100.0	M.RLTB M.RLTG	
6	8	9		4	1.6-3.3	1.5-3.2			
8	10	11	4	6	2.1-5.2	2-5.1			
10	13	15	5	8	2.6-7	2.5-6.9			

Order: Type No. - L - P - Y - B x Pcs
M.RLTG 4 - 50.2 - P1.5 - Y1.2 x 10

M.RLR SB M.RLR SBF

拉料销
Runner lock pins



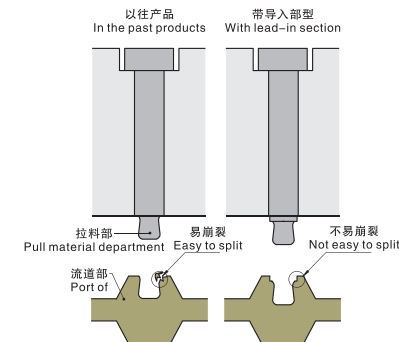
百通标准
Material材质: SKH51
Hardness 硬度: 58-60HRC

D	H	B	E	D	指定单位0.1mm		L	Type
					P	Y		
2	4	2	0.5	1.8	0.9-1.8	0.8-1.7	14.0~100.0	M.RLR SB
3	5			2.8	0.9-2.8	0.8-2.7		
4	6	2.5	0.8	3.8	1.1-3.8	1-3.7		
5	7	3	1	4.6	1.3-4.6	1.2-4.5	19.0~100.0	M.RLR SBF
6	8			5.6	1.6-5.6	1.5-5.5		

H	D1	指定单位0.1mm				L	D	Type
		P	Y	B	E			
4	1.8	0.9~1.8	0.8~1.7	1.5~3.0	0.5~1.0	14.0~100.0	2	M.RLR SBF
5	2.8	0.9~2.8	0.8~2.7	1.5~3.0	0.5~1.0		3	
6	3.8	1.1~3.8	1.0~3.7	1.5~3.8	0.5~1.0	4		
7	4.6	1.3~4.6	1.2~4.5	1.5~4.5	0.5~1.0	5		
8	5.6	1.6~5.6	1.5~5.5	1.5~4.5	0.5~1.0	6		

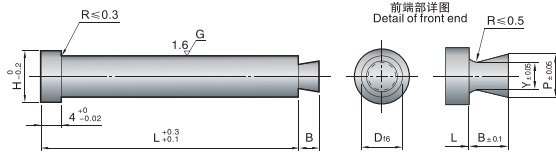
Order: Type No. - L - P - Y - B - E x Pcs
M.RLR SB 4 - 37.5 - P2.8 - Y2.3 x 10
M.RLR SBF 5 - 50.0 - P4.0 - Y3.5 - F3.5 - B0.5 x 10

Example 使用例



M.RLREB M.RLREBF

拉料销
Runner lock pins



百通标准

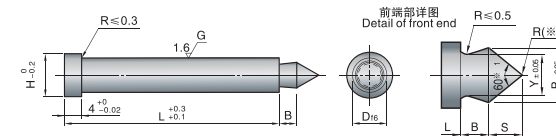
Material材质: SKH51
Hardness 硬度: 58-60HRC

D	H	B	指定单位0.1mm			Type
			L	P	Y	
2	4	2	14.0-100.0	0.9-1.9	0.8-1.8	M.RLREB M.RLREBF
3	5			0.9-2.9	0.8-2.3	
4	6	1.1-3.9		1-3.8		
5	7	1.3-4.9		1.2-4.8		
6	8	3	19.0-100.0	1.6-5.9	1.5-5.8	
8	10			2.1-7.9	2-7.8	

Order: Type No. - L - P - Y - B x Pcs
 M.RLREB 4 - 40.5 - P2.8 - Y2.3 x 10
 M.RLREBF 5 - 50.5 - P4.0 - Y3.5 - B3 x 10

M.RLKBF M.RLKGF

拉料销
Runner lock pins



百通标准

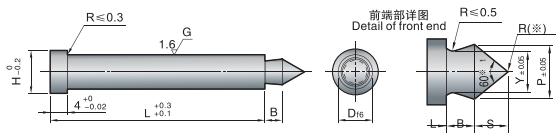
Material材质: SKH51
Hardness 硬度: 58-60HRC

D	H		B	指定单位0.1mm			Type
	M.RLKBF	M.RLKGF		P	Y	L	
2	4	4	1-3	0.9-1.9	0.8-1.8	14.0-200.0	M.RLKBF M.RLKGF
3	5	6		0.9-2.9	0.8-2.8		
4	6	7	1.3-3.8	1.1-3.9	1-3.8		
5	7	8	1.5-4.5	1.3-4.9	1.2-4.8		
6	8	9		1.6-5.9	1.5-5.8		
8	10	11	2-6	2.1-7.9	2-7.8		
10	13	15	2.5-7.5	2.6-9.9	2.5-9.8		

Order: Type No. - L - P - Y - B x Pcs
 M.RLKGF 4 - 37.5 - P2.8 - Y2.3 - B3.0 x 10

M.RLKL M.RLKS

拉料销
Runner lock pins



百通标准

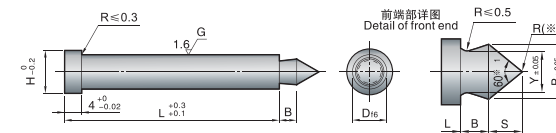
Material材质: SKH51
Hardness 硬度: 58-60HRC

D	H	B	P	d	指定单位0.1mm		Type
					L	Type	
2	4	2	1.5	1	14-100.0	M.RLKL M.RLKS	
3	5						2.3
4	6	2.8					2.3
5	7	3.8					2.8
6	8	3	19.0-100.0	3			
8	10			5			

Order: Type No. - L - P - Y - B x Pcs
 M.RLKL 3 - 37.5 - P2.3 - Y2.3 x 10
 M.RLKS 4 - 37.5 - P2.8 - Y2.3 - 2.5 x 10

M.RLKB M.RLKG

拉料销
Runner lock pins



百通标准

Material材质: SKH51
Hardness 硬度: 58-60HRC

D	H		B	指定单位0.1mm			Type
	M.RLKB	M.RLKG		P	Y	L	
2	4	4	2	0.9-1.9	0.8-1.8	14.0-100.0	M.RLKB M.RLKG
3	5	6		0.9-2.9	0.8-2.3		
4	6	7	2.5	1.1-3.9	1-3.8		
5	7	8	3	1.3-4.9	1.2-4.8		
6	8	9		1.6-5.9	1.5-5.8		
8	10	11	4	2.1-7.9	2-7.8		
10	13	15	5	2.6-9.9	2.5-9.8		

Order: Type No. - L - P - Y - B x Pcs
 M.RLKG 4 - 37.5 - P2.8 - Y2.3 x 10

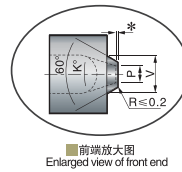
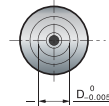
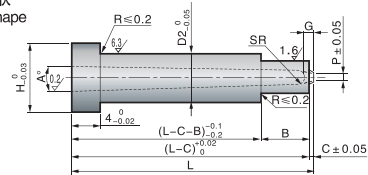
BT543

带肩点式浇口套
Shoulder sprue bushing



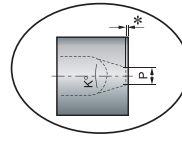
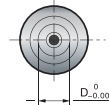
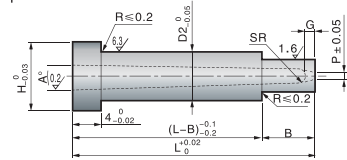
* P尺寸端部有0-0.2的直径
SR部放电精加工
D与P的偏心0.05以下
D与V的偏心0.05以下
P size with 0-0.2 straight segments at the ends
SR section discharge finishing The eccentricity of
D and P is below 0.05 The eccentricity of
D and V is below 0.05
A. Material材质: SKH51 Hardness硬度: 59-61HRC

1A形状 1 A shape



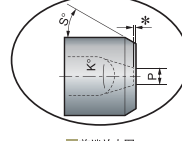
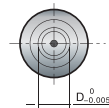
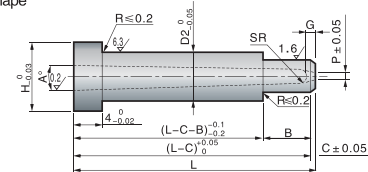
■前端放大图
Enlarged view of front end

2A形状 2 A shape



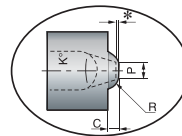
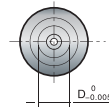
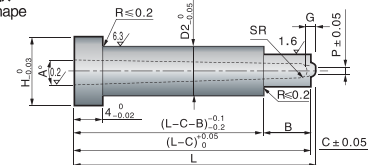
■前端放大图
Enlarged view of front end

3A形状 3 A shape



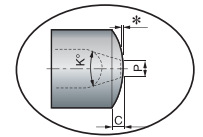
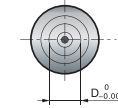
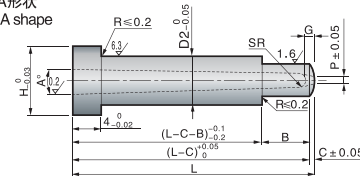
■前端放大图
Enlarged view of front end

4A形状 1 A shape



■前端放大图
Enlarged view of front end

5A形状 5 A shape



■前端放大图
Enlarged view of front end

百通标准

0.01mm单位	P	A°	K°	仅有2A形状 0.1mm单位	仅有1A形状 0.1mm单位	仅有3A形状 1°单位	仅有4A形状 0.1mm单位	H	D2	G	B	SR	Shape	D	Type
30.00~40.00	0.5 0.6 0.8	1	20	C	2.0~2.9	S°	R	8	5	1.2	6	1.00	1A	3	BT543
	0.6				2.5~3.9			9	6			1.00			
	0.8 1.0				1~45			1.25							
30.00~60.00	0.8 1.0	2	30	0.5~1.5	3.5~4.9	1-50	1.5~3.0	11	8	1.5	10	1.25	2A	5	BT543
	1.2				4.0~5.9			1.25							
	1.0				4.5~7.9			1.50							
	1.2 1.4				1.50										
	1.6				2.00										

● C尺寸仅1A 3A 4A 5A形状有, V尺寸仅1A形状有, S角度仅3A形状有, R尺寸仅4A形状有。
C size only 1A, 3A, 4A, 5A, V size only 1A, S Angle only 3A, R size only 4A.

Add.	Spec.	Type
	倒角加工	CC
	倒角加工 CVC=0.1mm单位 0.2 ≤ CVC < (D2-D)/2 -0.1	CVC

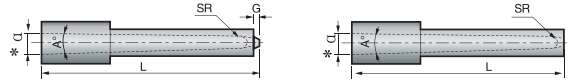
Order: Type No. x D x Pcs
BT543 x 3 x 10

BT544

点式浇口套
Point sprue bushing

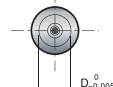
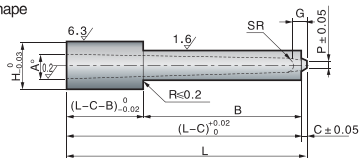


■ 入口直径*α的计算式 $*\alpha = 2SR + 2(L-G-SR) \tan \frac{A}{2}$
Material材质: SKH51 Hardness硬度: 59-61HRC

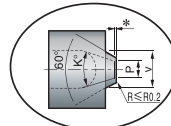


- *P尺寸端部有0-0.2的直段
P size with 0-0.2 straight segments at the ends
- SR部放电精加工
SR section discharge finishing
- D与P的偏心率0.05以下
The eccentricity of D and P is below 0.05
- D与V的偏心率0.05以下
The eccentricity of D and V is below 0.05

1A形状 1 A shape

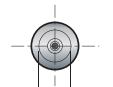
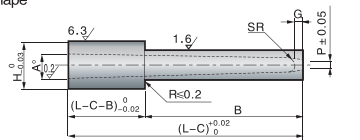


● (L-C-B) ≥ 3.0

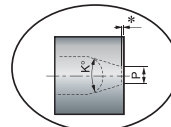


■ 前端放大图
Enlarged view of front end

2A形状 2 A shape

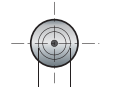
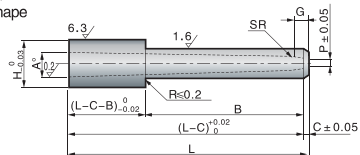


● (L-B) ≥ 3.0

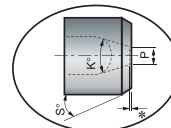


■ 前端放大图
Enlarged view of front end

3A形状 1 A shape

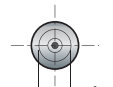
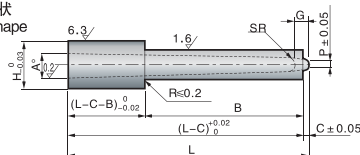


● (L-C-B) ≥ 3.0

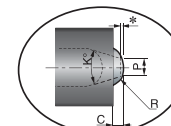


■ 前端放大图
Enlarged view of front end

4A形状 1 A shape

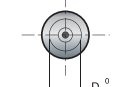
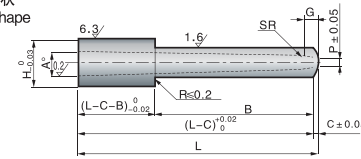


● (L-C-B) ≥ 3.0

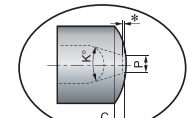


■ 前端放大图
Enlarged view of front end

5A形状 5 A shape



● (L-C-B) ≥ 3.0



■ 前端放大图
Enlarged view of front end

百通标准

0.01mm单位 L	P	A°	K°	B				H	G	SR	Shape	D	Type											
				不需给定 BT037-1	0.01mm单位 BT037-2	没有2A形状 0.1mm单位 C	仅有1A形状 0.1mm单位 V							仅有3A形状 1°单位 S°	仅有4A形状 0.1mm单位 R									
6.00-20.00	0.3	0.4	1	3	3.00-5.00	0.2-0.4	1.3-1.9		0.4-0.8	3	0.7	0.60	2											
														2	4	4.00-6.00	0.2-0.5	1.5-2.4		0.6-1.0	4	1	0.75	2.5
8.00-25.00	0.3	0.4	0.5	4	4.00-6.00	0.2-0.5	1.5-2.4		0.6-1.0	4	1	0.75	2.5											
														2	6	6.00-8.00	0.3-0.8	2.0-2.9	1-45	0.8-1.5	5	1.00	3	
																								3
10.00-40.00	0.6	2	20	6	6.00-30.00	0.3-0.8	2.5-3.9	1-45	0.8-1.5	6	1.2	1.00	4											
														2	10	6.00-20.00	0.3-0.8	2.5-3.9	1-45	0.8-1.5	6	1.2	1.00	4
15.00-60.00	0.8	1.0	30	10	6.00-20.00	0.3-0.8	2.5-3.9	1-45	0.8-1.5	6	1.2	1.00	4											
														2	15	6.00-35.00	0.3-0.8	2.5-3.9	1-45	0.8-1.5	6	1.2	1.00	4
15.00-60.00	1.2	1.0	30	10	6.00-30.00	0.3-0.8	2.5-3.9	1-45	0.8-1.5	6	1.2	1.00	4											
														2	20	6.00-50.00	0.3-0.8	2.5-3.9	1-45	0.8-1.5	6	1.2	1.00	4
15.00-60.00	1.2	1.4	30	10	6.00-30.00	0.3-0.8	2.5-3.9	1-45	0.8-1.5	6	1.2	1.00	4											
														2	20	6.00-40.00	0.3-0.8	2.5-3.9	1-45	0.8-1.5	6	1.2	1.00	4
15.00-60.00	1.2	1.4	30	10	6.00-30.00	0.3-0.8	2.5-3.9	1-45	0.8-1.5	6	1.2	1.00	4											
														2	20	6.00-50.00	0.3-0.8	2.5-3.9	1-45	0.8-1.5	6	1.2	1.00	4
15.00-60.00	1.6	2	30	10	6.00-50.00	0.3-0.8	2.5-3.9	1-45	0.8-1.5	6	1.2	1.00	4											
														2	20	6.00-50.00	0.3-0.8	2.5-3.9	1-45	0.8-1.5	6	1.2	1.00	4

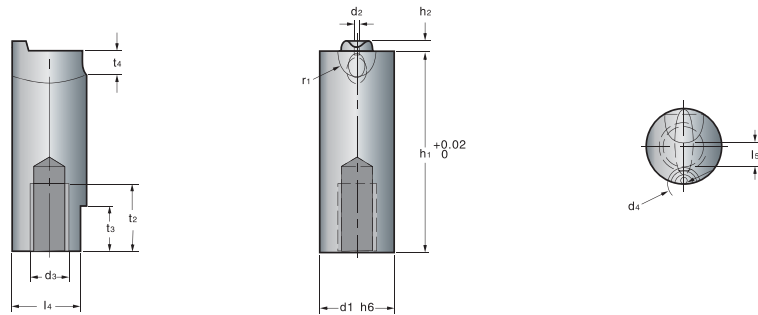
● C尺寸仅1A 3A 4A 5A形状有, V尺寸仅1A形状有, S角度仅3A形状有, R尺寸仅4A形状有。
BT037-2时: (L-C-B) ≥ 3.0 2A形状时 (L-B) ≥ 3.0
C size only 1A, 3A, 4A, 5A, V size only 1A, S Angle only 3A, R size only 4A.
BT037-2: (L-C-B) ≥ 3.0 2A shape (L-B) ≥ 3.0

Add.	Spec.	Type
	倒角加工 ● D2·2.5时 倒角为C0.2-0.4	CC
	倒角加工 CVC=0.1mm单位 0.2 ≤ CVC < $\frac{(H-D)}{2} - 0.1$	CVC

Order: Type No. x D x Pcs
BT544-1 x 2 x 10

D.GIR

牛角式进浇口镶件
Insets of inlet gate of horn wires

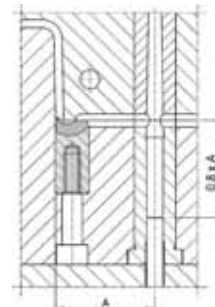
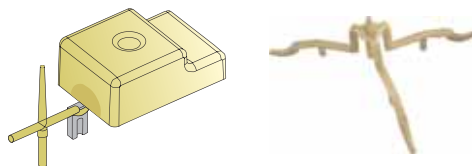


百通标准

Material材质: 1.2767 Steel
Hardness硬度: 54 ± 2HRC

d1	h1	d2	h2	l5	l4	d4	d3	t4	t3	t2	r1	Type
6	17-	0.4	0.8	2	5.5	2.6	M4	2	5	10	1.5	D.GIR061704
6	17-	0.6										D.GIR061706
6	17-	0.8	0.8	3.5	7.5	2.8	M4	2	5	10	2	D.GIR061708
8	22-	0.6										D.GIR082206
8	22-	0.8										D.GIR082208
8	22-	1	0.8	4	9	3	M5	2.25	7	12	2.25	D.GIR082210
10	27-	0.6										D.GIR102706
10	27-	0.8										D.GIR102708
10	27-	1										D.GIR102710
12	27-	0.8	0.8	4.5	11	3.5	M6	2.5	7	12	2.5	D.GIR122708
12	27-	1										D.GIR122710
12	27-	1.2										D.GIR122712

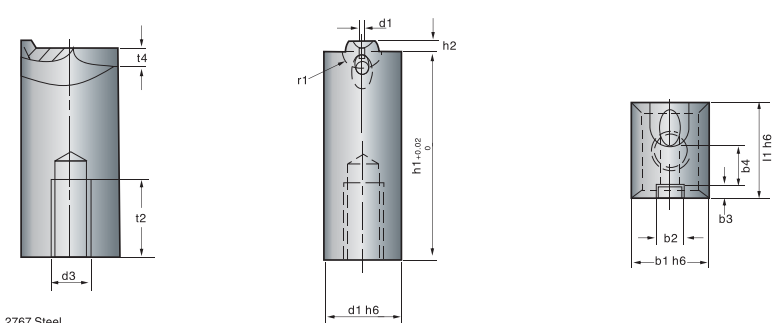
Example
使用例



Order: Type No. x Pcs
D.GIR061704 x 10

D.GIS

牛角式进浇口镶件
Insets of inlet gate of horn wires

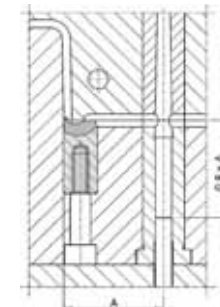
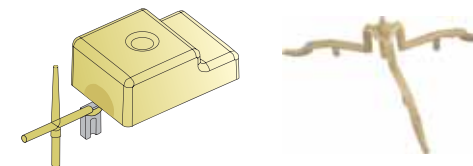


百通标准

Material材质: 1.2767 Steel
Hardness硬度: 54 ± 2HRC

l1	b1	h1	d1	h2	d3	b4	b3	b2	t4	t2	r1	Type
8	6	17-	0.4	0.8	M4	3.7	1.3	2.6	2	10	1.5	D.GIS08061704
8	6	17-	0.6									D.GIS08061706
8	6	17-	0.8	0.8	M4	4	1.4	2.8	2	10	2	D.GIS08061708
10	8	22-	0.6									D.GIS10082206
10	8	22-	0.8									D.GIS10082208
10	8	22-	1	0.8	M5	4.5	1.5	3	2.25	12	5	D.GIS10082210
12	10	27-	0.6									D.GIS12102706
12	10	27-	0.8									D.GIS12102708
12	10	27-	1									D.GIS12102710
15	12	27-	0.8	0.8	M6	5	1.75	3.5	2.5	12	2.5	D.GIS15122708
15	12	27-	1									D.GIS15122710
15	12	27-	1.2									D.GIS15122712

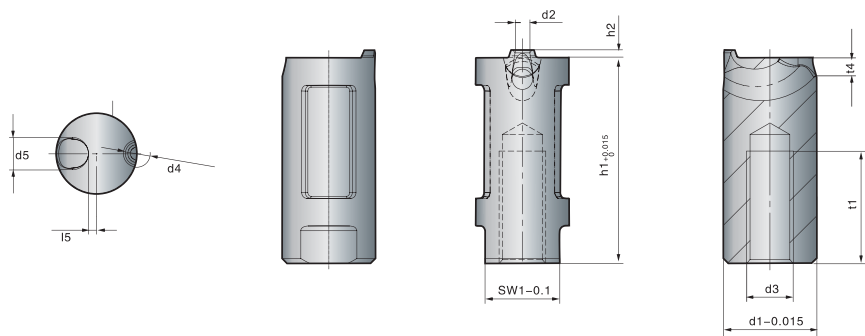
Example
使用例



Order: Type No. x Pcs
D.GIS08061704 x 10

H.Z1050

牛角式进浇口镶件
Insets of inlet gate of horn wires



百通标准

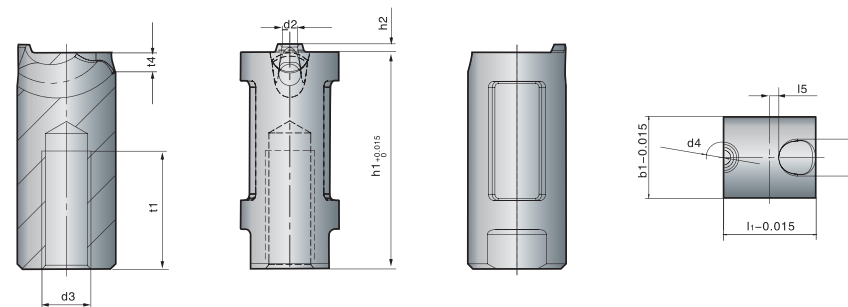
Material材质: 1.3343 Steel
Hardness硬度: 54HRC

SW1	t1	t4	l5	h2	d3	d4	d5	d1	h1	d2	Type
5.5	10	1.25	0.5	0.6	M4	2.2	2.5	6	17	0.6	H.Z1050/ 6X17X0.6
6	13	1.5	0.75			2.2	3	8	22	0.6	H.Z1050/ 8X22X0.6
						0.8				0.8	
8	12	2	1	0.8	M5	2.5	4	10	22	0.8	H.Z1050/ 10X22X0.8
						1.2				1.2	
						1.6				1.6	
10	11	2.5	1	0.8	M5	2.9	5	12	22	1.2	H.Z1050/ 12X22X1.2
						1.6				1.6	
						2.0				2.0	

Order: Type No. x Pcs
H.Z1050/ 6X17X0.6 x 10

H.Z1060

牛角式进浇口镶件
Insets of inlet gate of horn wires



百通标准

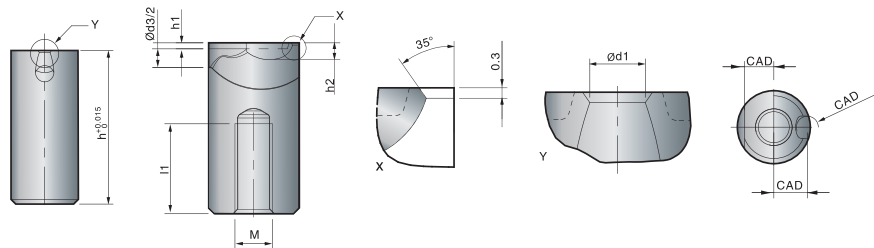
Material材质: 1.3343 Steel
Hardness硬度: 54HRC

t1	t4	l5	h2	d3	d4	d5	l1	b1	h1	d2	Type
13	1.5	0.75	0.6	M4	2.2	3	8	6	22	0.6	H.Z1060/8x6x22x0.6
					2.4					0.8	
12	2	1	0.8	M5	2.5	4	10	8	22	0.8	H.Z1060/10x8x22x0.6
					3.0					1.2	
					3.3					1.6	
11	2.5	1	0.8	M5	2.9	5	12	10	22	1.2	H.Z1060/12x10x22x1.2
					3.3					1.6	
					3.7					2.0	

Order: Type No. x Pcs
H.Z1060/8x6x22x0.6 x 10

I.TGR/TGS-S1

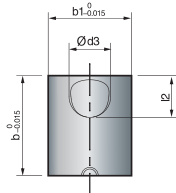
牛角式进浇口镶件
Insets of inlet gate of horn wires



I.TGS

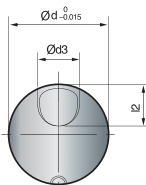
百通标准

b	b1	d1	d3	h	h1	h2	l1	l2	M	Version	Type
8	6	0.6	3	22.6	0.6	1.7	13	3.25	4	S1	I.TGS8
10	8	0.8	4	22.8	0.8	2.0	12	4	5	S1	I.TGS10
		1.2									
		1.6									
12	10	1.2	5	22.8	0.8	2.2	11	5	5	S1	I.TGS12
		1.6									
		2.0									
14	12	1.6	6	22.8	0.8	2.4	10	6	6	S1	TGS14
		2.0									
		2.4									
		2.8									



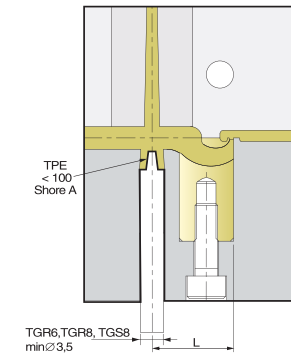
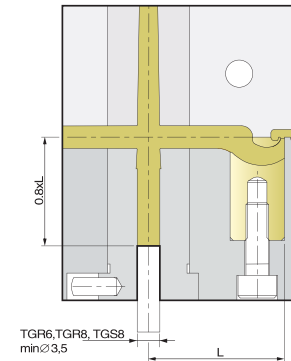
I.TGR

d	d1	d3	h	h1	h2	l1	l2	M	Version	Type
6	0.6	2.5	22.6	0.6	1.7	13	3.25	4	S1	I.TGR6
8	0.6	3	22.6	0.6	1.7	13	3.25	4	S1	I.TGR8
		0.8								
10	0.8	4	22.8	0.8	2.0	12	4	5	S1	I.TGR10
		1.2								
		1.6								
12	1.2	5	22.8	0.8	2.2	11	5	5	S1	I.TGR12
		1.6								
		2.0								
14	1.6	6	22.8	0.8	2.4	10	6	6	S1	I.TGR14
		2.0								
		2.4								
		2.8								



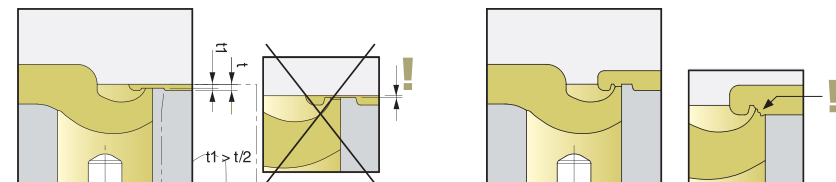
Order: [Type No.] x [Pcs]
I.TGR6/TGS8 x 10

Example 使用例



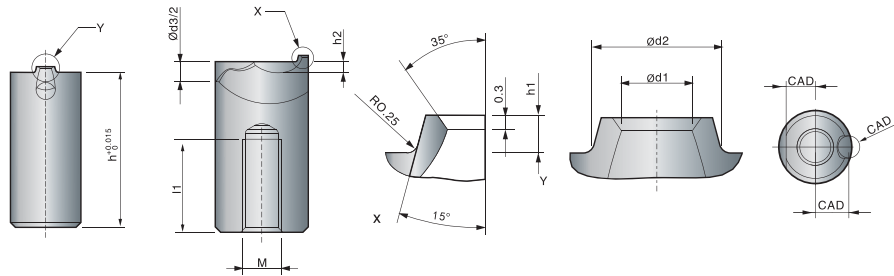
百通标准

L				
材质Materiakart · Material tipe · Tipo di materiale				
TPE,TUP etc.	PE,PP,PET etc.	PC/ABS,PA,POM HI-PC etc.	PA,GF,PC,SAN, PMMA etc.	Type
9-12	12-18	15-22	18-25	I.TGR6
11-14	15-22	19-27	23-30	I.TGR/TGS8
15-18	19-27	24-33	28-36	I.TGR/TGS10
18-22	22-30	27-36	32-40	I.TGR/TGS12
20-25	25-33	30-37	35-43	I.TGR/TGS14



I.TGR/TGS-S2

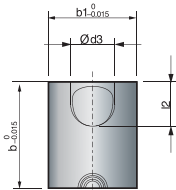
牛角式进浇口镶件
Insets of inlet gate of horn wires



I.TGS

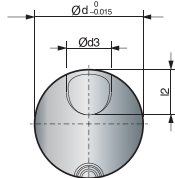
百通标准

b	b1	d1	d2	d3	h	h1	h2	l1	l2	M	Version	Type
8	6	0.6	1.9	3	22.0	0.6	1.1	13	3.25	4	S2	I.TGS8
		0.8	2.1									
10	8	0.8	2.2	4	22.0	0.8	1.2	12	4	5	S2	I.TGS10
		1.2	2.6									
		1.6	3.0									
12	10	1.2	2.6	5	22.0	0.8	1.40	11	5	5	S2	I.TGS12
		1.6	3.0									
		2.0	3.4									
14	12	1.6	3.0	6	22.0	0.8	1.6	10	6	6	S2	I.TGS14
		2.0	3.4									
		2.4	3.8									
		2.8	4.2									



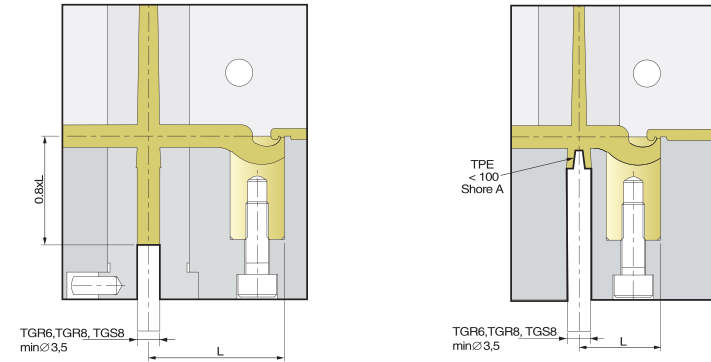
I.TGR

d	d1	d2	d3	h	h1	h2	l1	l2	M	Version	Type
6	0.6	1.9	2.5	17.0	0.6	0.8	10	2.5	4	S2	I.TGR6
8	0.6	1.9	3	22.0	0.6	1.1	13	3.25	4	S2	I.TGR8
		0.8	2.1								
10	0.8	2.2	4	22.0	0.8	1.2	12	4	5	S2	I.TGR10
		1.2	2.6								
		1.6	3.0								
12	1.2	2.6	5	22.0	0.8	1.4	11	5	5	S2	I.TGR12
		1.6	3.0								
		2.0	3.4								
14	1.6	3.0	6	22.0	0.8	1.6	10	6	6	S2	I.TGR14
		2.0	3.4								
		2.4	3.8								
		2.8	4.2								



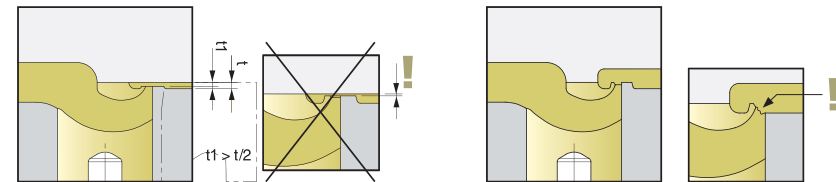
Order: [Type No.] x [Pos]
I.TGR6/TGS8 x 10

Example 使用例



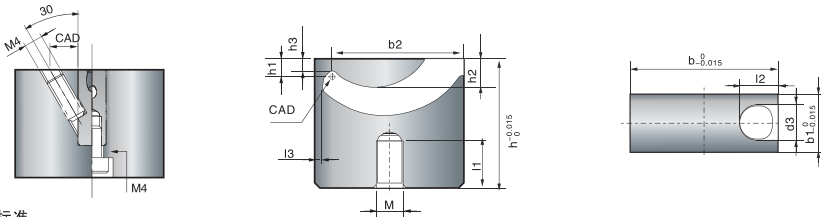
百通标准

L				
材质Materiakart · Material tipe · Tipo di materiale				
TPE,TUP etc.	PE,PP,PET etc.	PC/ABS,PA,POM HI-PC etc.	PA,GF,PC,SAN, PMMA etc.	Type
9-12	12-18	15-22	18-25	I.TGR6
11-14	15-22	19-27	23-30	I.TGR/TGS8
15-18	19-27	24-33	28-36	I.TGR/TGS10
18-22	22-30	27-36	32-40	I.TGR/TGS12
20-25	25-33	30-37	35-43	I.TGR/TGS14



I.TGC/S/XS

牛角式进浇口镶件
Insets of inlet gate of horn wires

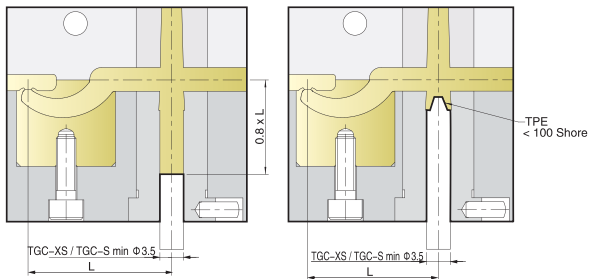


百通标准

b	b1	b2	d3	h	h1	h2	h3	l1	l2	l3	M	HRC	Type
10	5	8.5	2.5	12	1	1.9	0.6	5	3.2	0.7	4	Version U =40 HRC Version H =60 HRC	I.TGC-XS
15	6	13.3	2.5	18	2	3.5	1.5	8	4	0.9	4		I.TGC-S
18	8	16	4	22	2	3.5	1.3	9	5.2	0.9	5		I.TGC-1
25	10	22.1	6	22	3	4.8	2.1	8	6.5	1.2	5		I.TGC-2
30	12	26.9	8	27	5	7.5	4.1	9	7	1.2	6		I.TGC-3
45	12	41.2	8	36	10	16.7	9.1	8	9.6	1.8	6		I.TGC-4

L				
材质Materiakart · Material tipe · Tipo di materiale				
TPE,TUP etc.	PE,PP,PET etc.	PC/ABS,PA,POM HI-PC etc.	PA+GF,PC,SAN, PMMA etc.	Type
12-16	13-20	16-23	22-29	I.TGC-XS
16-21	18-25	21-28	27-34	I.TGC-S
21-26	26-34	31-39	36-45	I.TGC-1
28-33	31-39	36-44	41-50	I.TGC-2
33-38	38-48	43-53	48-58	I.TGC-3
45-53	53-63	58-68	?	I.TGC-4

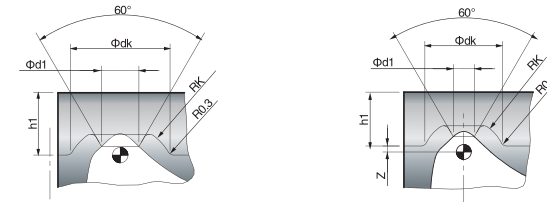
Example 使用例



Order: Type No. x Pcs
I.TGC-XS x 10

I.TGC-XS/-S/-1/-2

牛角式进浇口镶件
Insets of inlet gate of horn wires



百通标准

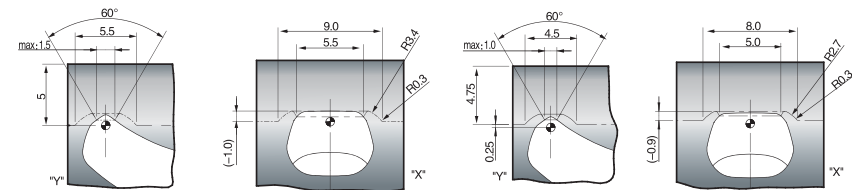
h1	d1 max.	dk	Rk	Z	Type
1.0	0.6	2.5	1.6	-	I.TGC-XS
2.0	0.8	2.7	1.7	-	I.TGC-S
1.8	0.7	2.6	1.4	0.2	I.TGC-1
2.0	1.2	3.2	1.8	-	
2.75	1.2	3.5	2.0	0.25	I.TGC-2
3.0	1.8	4.5	2.6	-	

Order: Type No. x Pcs
I.TGC-XS x 10

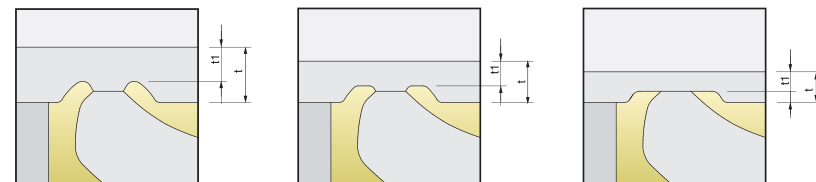


I.TGC-3/-4

牛角式进浇口镶件
Insets of inlet gate of horn wires

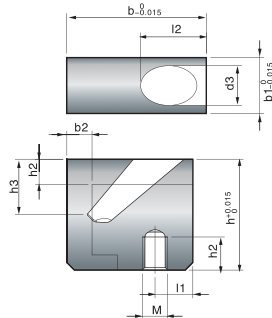


Example 使用例



I.TPS

牛角式进浇口镶件
Insets of inlet gate of horn wires



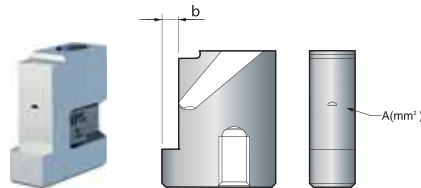
百通标准

b	b1	b2 max	d3	h	h1 max	h3	l1	l2	l3	M	Type
15	6	2.4	4	18	4	~7	6	7.1	5.5	4	I.TPS-S
18	8	2.6	6	22	5	~9	6	8.4	6	4	I.TPS-1
25	10	5	8	22	6	~11	6	11.8	7.5	5	I.TPS-2
30	12	6.5	10	27	7	~13	6	14.1	8	5	I.TPS-3

Order: Type No. x Pcs
I.TPS-S x 10

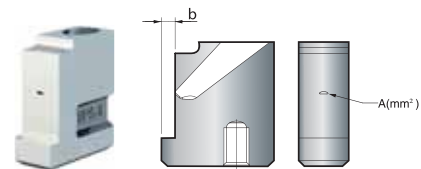
TPS-S

A[mm ²]	~Φ[mm]	b2[mm]
0.12	0.4	2.1
0.40	0.7	2.2
0.75	1.0	2.3
1.13	1.2	2.4



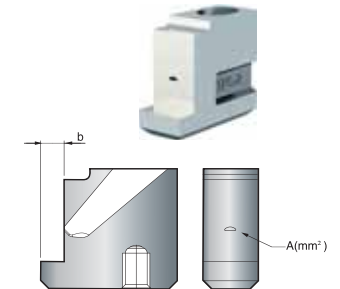
TPS-1

A[mm ²]	~Φ[mm]	b2[mm]
0.49	0.8	2.2
0.92	1.1	2.3
1.42	1.4	2.4
1.97	1.6	2.5
2.56	1.8	2.6



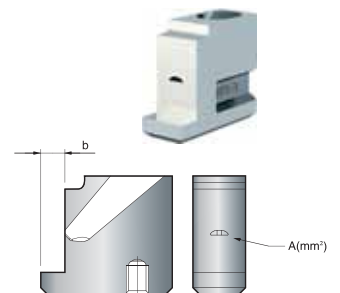
TPS-2

A[mm ²]	~Φ[mm]	b2[mm]
0.54	0.8	4.2
1.05	1.2	4.3
1.64	1.5	4.4
2.3	1.7	4.5
3.0	1.9	4.6
3.76	2.2	4.7
4.55	2.4	4.8
5.37	2.6	4.9
6.23	2.8	5.0

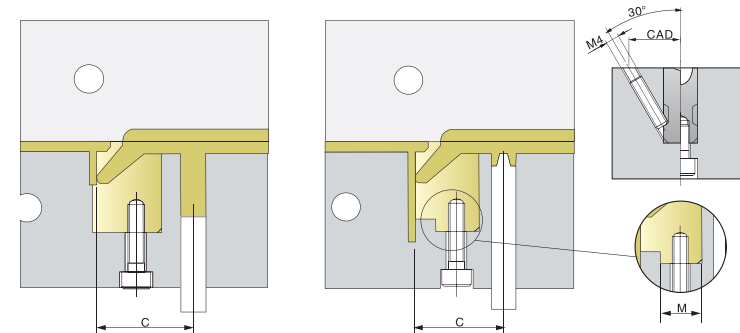


TPS-3

A[mm ²]	~Φ[mm]	b2[mm]
1.0	1.1	5.2
1.81	1.5	5.3
2.7	1.9	5.4
3.67	2.2	5.5
4.7	2.4	5.6
5.78	2.7	5.7
6.92	3.0	5.8
8.09	3.2	5.9
9.3	3.4	6.0
max.15.8	4.5	6.5

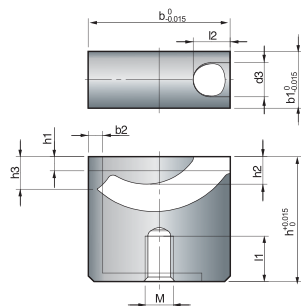


Example 使用例



I.SGC

牛角式进浇口镶件
Insets of inlet gate of horn wires



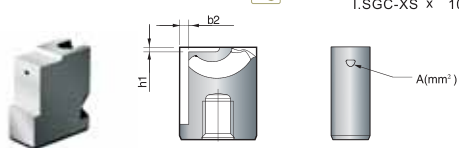
百通标准

b	b1	b2 max	d3	h	h1 max	h2	h3	l1	l2	M	Type
10	5	1.1	2.5	12	0.6	1.9	2.0	5	3.2	4	I.SGC-XS
15	6	2.0	2.5	18	2	3.5	4.0	8	4	4	I.SGC-S
18	8	1.8	4	22	2	3.5	4.1	9	5.2	5	I.SGC-1
25	10	2.5	6	22	2.5	4.8	5.7	8	6.5	5	I.SGC-2
30	12	2.8	8	27	4.5	7.5	8.4	9	7	6	I.SGC-3

Order: Type No. x [Pcs]
I.SGC-XS x 10

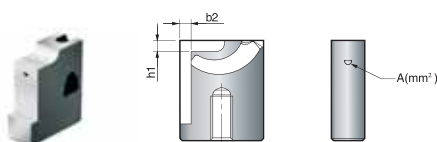
SGC-XS

A[mm ²]	~Φ[mm]	b2[mm]
0.13	0.4	0.9
0.3	0.6	1.0
0.53	0.8	1.1



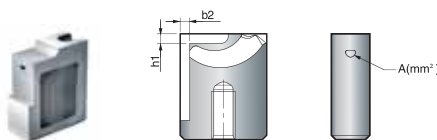
SGC-S

A[mm ²]	~Φ[mm]	b2[mm]
0.15	0.4	1.7
0.33	0.6	1.8
0.55	0.8	1.9
0.79	1.0	2.0



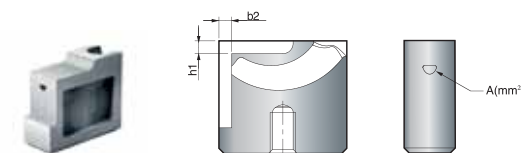
SGC-1

A[mm ²]	~Φ[mm]	b2[mm]
0.28	0.6	1.4
0.53	0.8	1.5
0.82	1.0	1.6
1.15	1.2	1.7
1.52	1.4	1.8



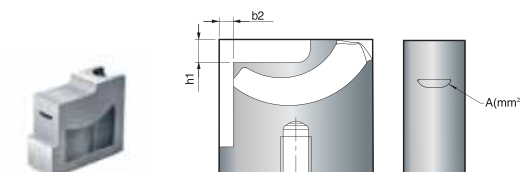
SGC-2

A[mm ²]	~h1[mm]	b2[mm]
0.28	0.6	1.7
0.54	0.8	1.8
0.84	1.0	1.9
1.2	1.2	2.0
1.57	1.4	2.1
2	1.6	2.2
2.43	1.75	2.3
2.9	1.9	2.4
3.4	2.1	2.5



SGC-3

A[mm ²]	~h1[mm]	b2[mm]
1	1.1	2.0
1.75	1.5	2.1
2.56	1.8	2.2
3.43	2.1	2.3
4.35	2.35	2.4
5.32	2.6	2.5
6.33	2.85	2.6
7.38	3	2.7
8.48	3.3	2.8



Example 使用例

