



**Centring Pin**

VW / AUDI  
Ref.: 39V 1205

Code: **G65**

BMW  
Ref.: B2 4068 2

**Centring Pin**

Mercedes-Benz Standard  
Ref.: B8 0602 321 008 801

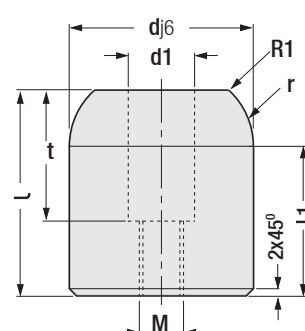
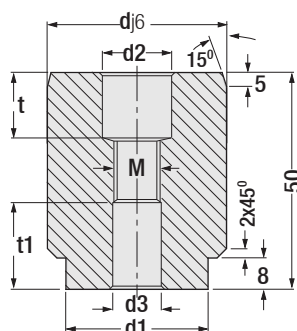
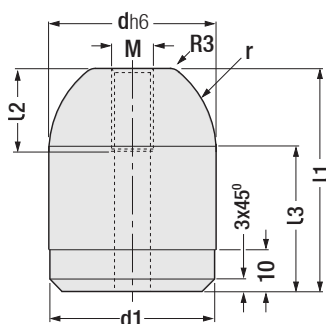
Code: **G62**

**Centring Pin**

FCA  
Ref.: STQ.40015

Code: **G66**

**Centring Pins:** It is used for centring of perforated parts. Using centring pin provides centring repeatedly with high sensitivity at dies and fixtures. Mounted parts are centered with high sensitivity and quickly. Screws used for mounting of products should be provided by user.



Code: **G65**

d	l1	l2	l3	d1	M	r
22	45	16	35	21.95	M8	15
22	55	16	45	21.95	M8	15
32	50	20	35	31.95	M10	20
40	55	20	35	39.95	M10	25
40	65	20	45	39.95	M10	25
50	55	20	35	49.95	M10	25

Code: **G62**

d	d1	d2	d3	M	t	t1
22	16	11	9	M8	13	16
25	18	11	9	M8	13	16
32	25	11	9	M8	13	16
40	32	15	11	M10	16	20
50	42	15	11	M10	16	20

Code: **G66**

d	l	l1	d1	t	M	r
22	45	37.5	14	25	M10	20
32	50	40	18	35	M12	20
40	55	40	18	35	M12	20
50	55	40	18	35	M12	20



Order: **G66. d**



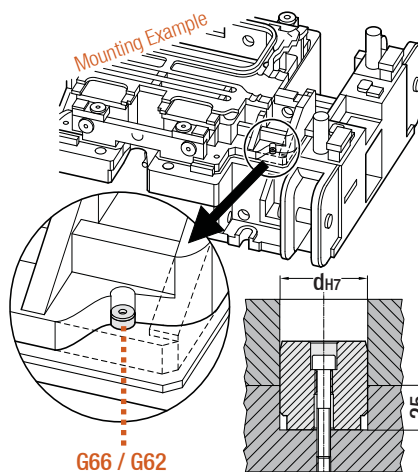
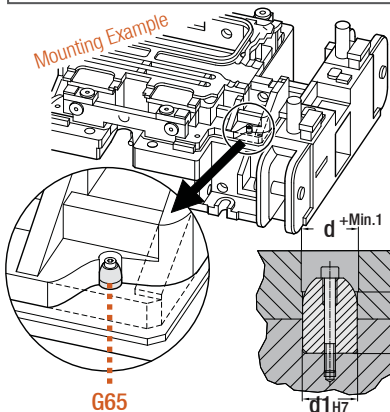
Order: **G62. d**



Order: **G65. d x l1**

Material: 1.7131 (16MnCr5)  
Hardness: 58 - 62 HRC

All dimensions without tolerance are in EN 22768 - 1 (m) standards.



NEW

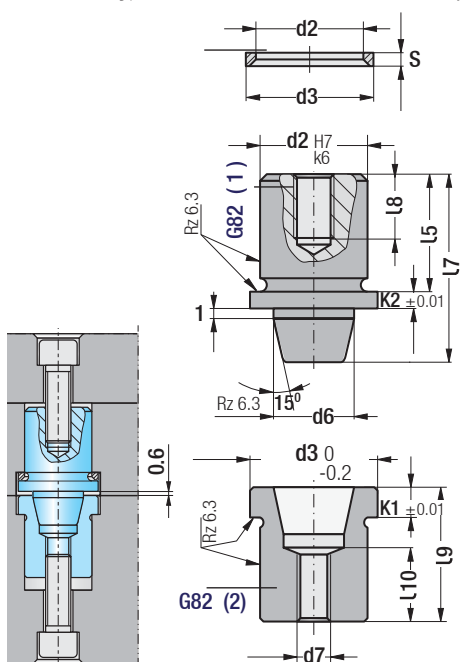


Code: **G82**

### Tapered Locating Unit, Headed

**Tapered Locating Units:** They are used to increase speed of repeatability while providing precision centring in dies and moulds. Mounting screws are provided with products and the support washer (G59) can be provided as per request.

**Headed Type:** It is suitable to be used for centring in female and male plates in moulds (seal-rubber & blowing moulds).



Code: **G82**

d2	d3	d6	d7	K1	K2
14	17	12	M.8	4	2.5
24	28	20	M.8	6	4
34	38	30	M.8	8	5
42	46	35	M.8	8	5

d2	l5	l7	l8	l9	l10	S
14	17	24.5	15	19.5	13	1.7
24	27	42	20	32	18	2.0
34	28	42	20	32	18	3.0
42	28	48	20	47	28	3.0

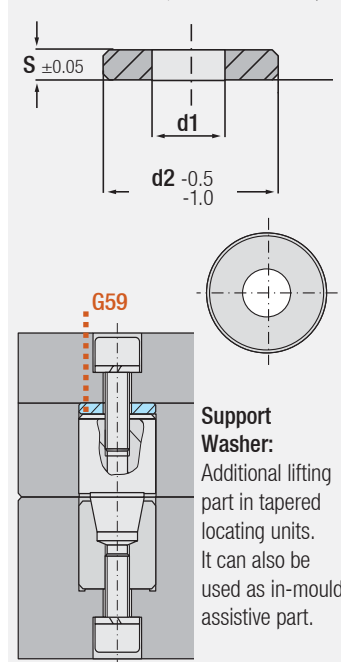
Order: **G82. d2**

Material: 1.7131 (16MnCr5)  
Hardness: 60 - 62 HRC



Code: **G59**

### Support Washer



**Support Washer:** Additional lifting part in tapered locating units. It can also be used as in-mould assistive part.

Code: **G59**

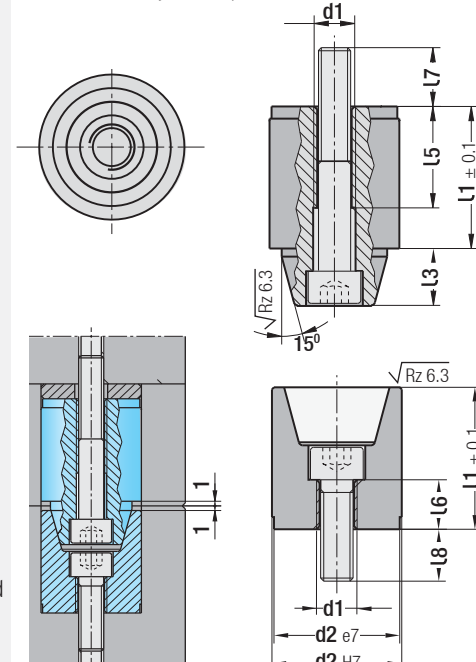
d2	S	d1
12	5	6.5
	10	
14	5	6.5
	10	
16	5	6.5
	10	
17	5	8.5
	10	
20	5	8.5
	10	
	20	
25	5	8.5
	10	
	20	
26	5	8.5
	10	
	20	
30	5	10.5
	10	
32	5	10.5
	10	
40	5	10.5
	10	
42	5	10.5
	10	
50	5	13
	10	

Order: **G59. d2 x S**



Code: **G60**

### Tapered Locating Unit



Code: **G60**

d2	l1	l3	l5	l6	l7	l8	Screw d1
12	16	4.5	9.6	7	8	7.5	M4
	16	6	12.4	6	6	6	
14	16	6	12.4	6	6	6	M5
	16	6	12.4	6	6	6	
20	26	9	19.7	10.5	12	9.5	M8
	26	10	19.7	10.5	11	11	
30	35	14	25	11.5	15	13	M10
	35	14	25	12.4	15	13	
42	45	18	27	18.5	16	13	M10
	45	18	27	18.5	16	13	

Order: **G60. d2**

Material: 1.7131 (16MnCr5)  
Hardness: 60 - 62 HRC



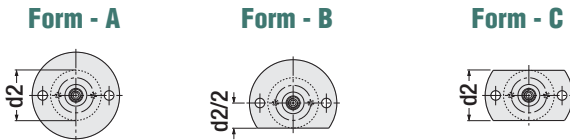
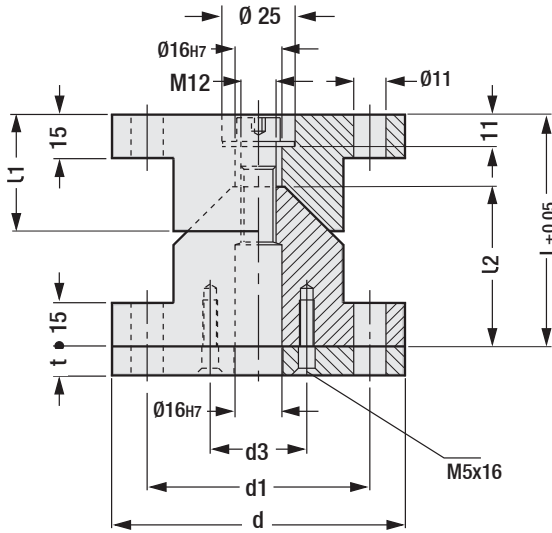


## Locating Cone

Code: **G64**

Shim plates are with the unit in thickness (t) specified dimensions as a standard. Except this, other form (A - B - C) shim plates can be ordered as per request. Mounting screws are excluded.

Material: 1.7131 / Hardness: 60 - 64 HRC



Code: **G64**

d	l	d1	d2	d3	l1	l2	t	Form
100	80	76	58	40.5	40	55	5.5	A
120	90	96	78	50.5	50	65		
100	80	76	58	40.5	40	55	5.5	B
120	90	96	78	50.5	50	65		
100	80	76	58	40.5	40	55	5.5	C
120	90	96	78	50.5	50	65		
100	80	76	58	40.5	40	55	10	A
120	90	96	78	50.5	50	65		
100	80	76	58	40.5	40	55	10	B
120	90	96	78	50.5	50	65		
100	80	76	58	40.5	40	55	10	C
120	90	96	78	50.5	50	65		
100	80	76	58	40.5	40	55	10.5	C
120	90	96	78	50.5	50	65		

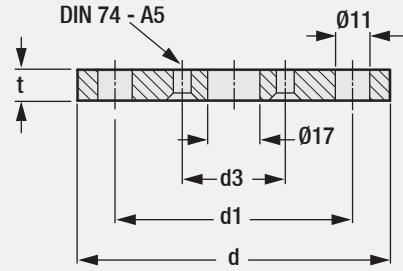
Order: **G64. d x l x t x Form**

Order Example: **G64. 120 x 90 x 10 x A**

## Shim Plate for Locating Cone

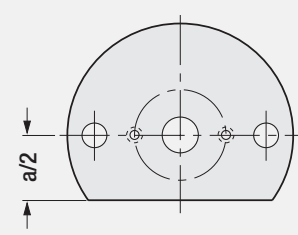
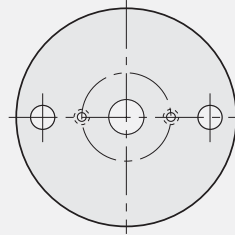
Code: **G64A**

(Custom-made products as per request)

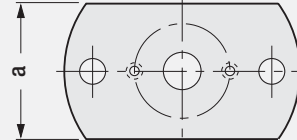


Form - A

Form - B



Form - C



Note: Fixing screws will be provided separately.

Code: **G64A**

d	t	d1	d3	a	Form
100	5.5	76	40.5	58	A
120		96	50.5	78	
100	5.5	76	40.5	58	B
120		96	50.5	78	
100	5.5	76	40.5	58	C
120		96	50.5	78	
100	10	76	40.5	58	A
120		96	50.5	78	
100	10	76	40.5	58	B
120		96	50.5	78	
100	10	76	40.5	58	C
120		96	50.5	78	
100	10.5	76	40.5	58	C
120		96	50.5	78	

Order: **G64A. d x t x Form**

Material: 1.0503 (CK45)

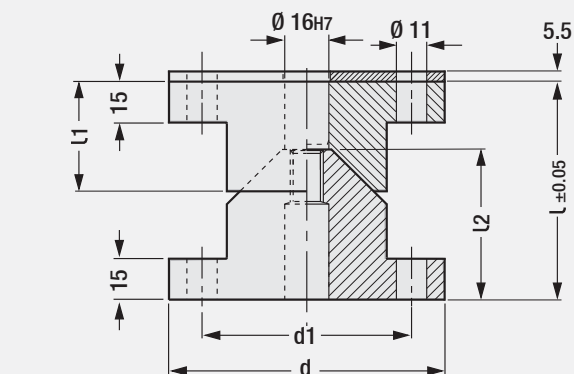


### Locating Cone - NAAMS

Code: G63

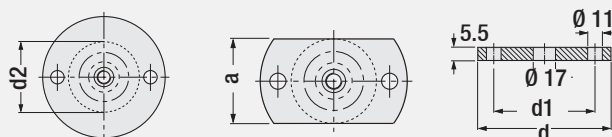
Shim Plate (as per request, Form A - B)

Reference: NAAMS G91



Form - A

Form - B



Code: G63

d	l	d1	d2	l1	l2	Form
100	80	76	58	40	55	A
120	90	96	78	50	65	
100	80	76	58	40	55	B
120	90	96	78	50	65	

Shim plates are with locating cones in (5.5 mm) dimension as a standard. For your custom-made shim plate orders, you can make selections from the following table.

 <b>Order:</b> <b>G63. d x Form</b>	<b>Material:</b> 1.7131 (16MnCr5) <b>Hardness:</b> 60 - 64 HRC
---	---



### Shim Plate

Code: G63A

d	d1	a	Form
100	76	-	A
120	96	-	
100	76	58	B
120	96	78	

 <b>Order:</b> <b>G63A. d x Form</b>	<b>Material:</b> 1.0503 (CK45)
--	--------------------------------

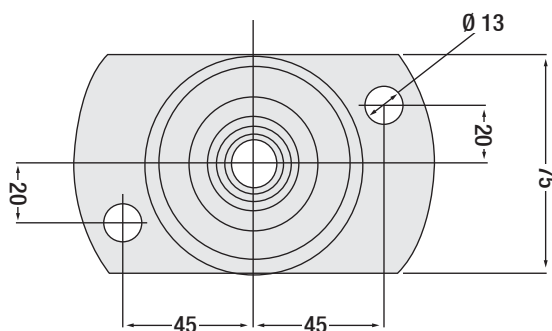
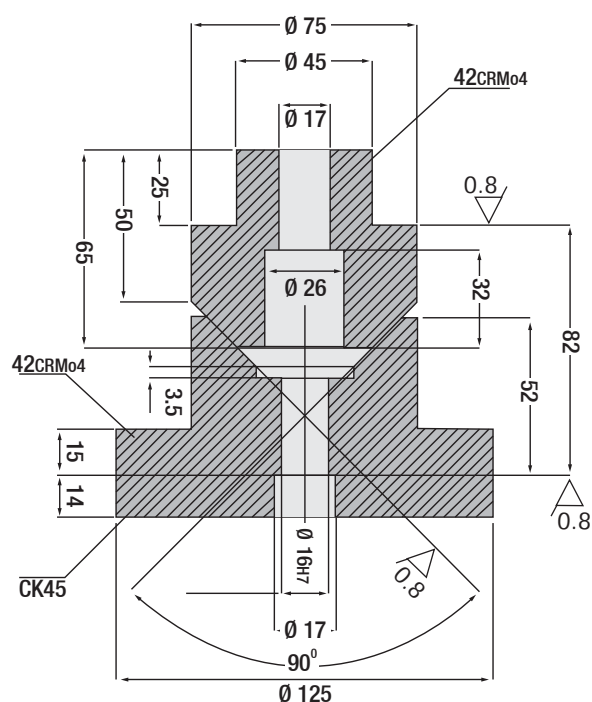


### Locating Cone

Code: G46

(Custom-made products as per request)

Note: For all dimensions without tolerance according to EN 22768-1 (m), all corners will be chamfered.



 <b>Order:</b> G46	<b>Material:</b> See Technical Drawing
---	---



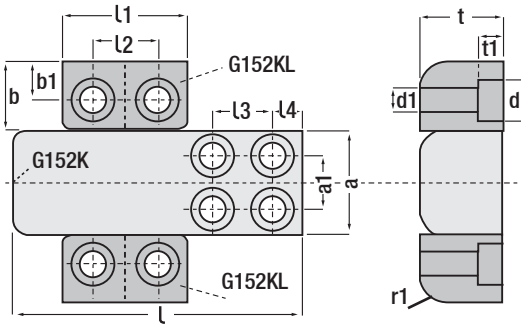
**Bar Lock Slide Block** Code: **G152K**

It provides making selections among ready-made products for wide moulds with movable plates more than one for mould designers. During production, insert locks and only wipe outer surfaces. **Please do not touch thin layer of lubrication in joints.**

Order: **G152K. a x l**

Material: 1.2343  
Hardness: 58 - 62 HRC

**Bar Lock System** Code: **G152**



Order: **G152. t x l**

**Bar Lock Guide Jaw** Code: **G152KL**

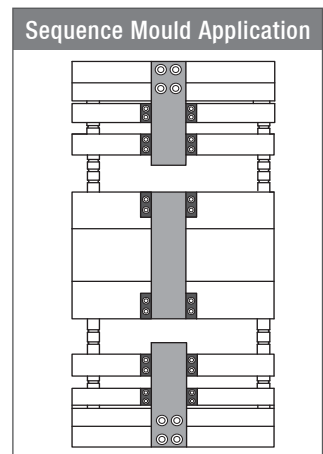
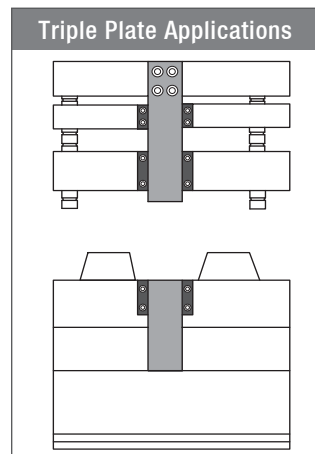
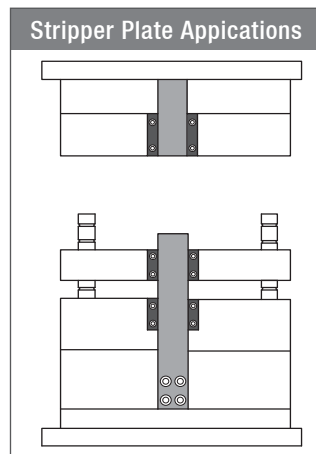
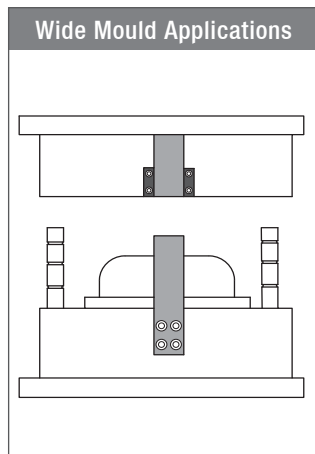
All parts, including part holder rings, are applied a thin layer of oil (fit for food industry) before all areas dry and get hardened. **G152KL** product can be used in group applications for each mould as 2 pieces and multi bar lock guide jaws can be used in different designs. There are 2 pcs jaws in 1 set.

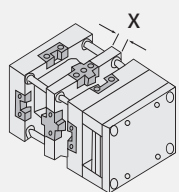
Order: **G152KL. l1 x b**

Material: 1.2343  
Hardness: 52 - 54 HRC

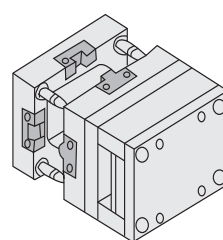
**Bar Lock System Contents (G152): G152K= 1 pcs. + G152KL= 1 set (2 pcs).**

a g5	l -0.1 / -0.2	L3	L4	a1	t -0.1	l1	b g5	L2	b1	d1 Ø	d Ø	t1 mm	r1
32	70	18	9	14	22	36	20	16	10	6.6 M6	11	6.8	6
	90												
	112												
50	90	21	12	24	30	46	25	24	11	9 M8	15	9	8
	125												
	150												
60	112	26	15	30	32	56	32	30	16	11 M10	18	11	10
	150												
	175												
80	112	26	15	44	35	56	35	30	16	11 M10	18	11	12
	150												
	175												
100	175	32	18	55	50	76	40	40	17	13.5 M12	20	13	15
	200												
	250												
120	200	35	20	75	65	86	45	50	20	13.5 M12	20	13	15
	250												
	300												



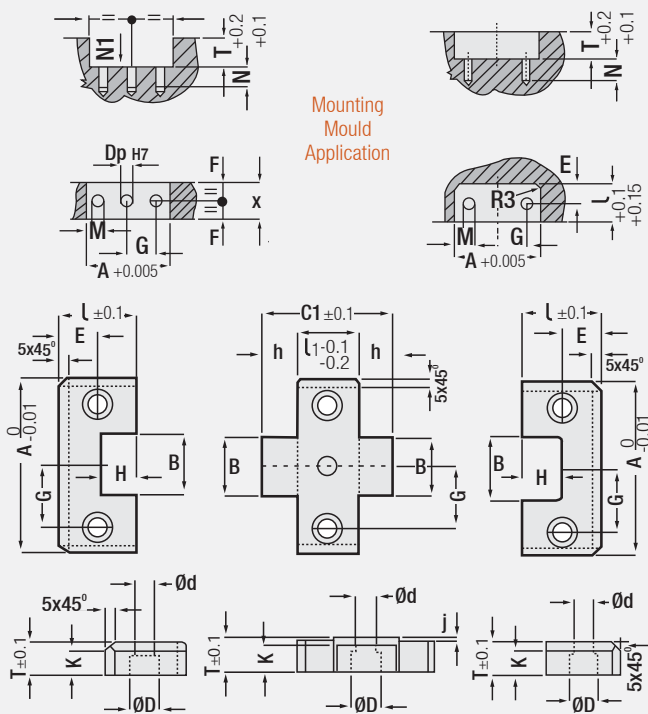


Oil grooves were created on the working surfaces of the products.



### Group Locating - Centring Unit

Code: **G127**



Code: **G127**

A	X	B	C1	D	d	E	F	G	h
50	26	17	43	10.5	6.5	11	13	17	8.5
	36		53				18		
75	26	25	54	16.5	10.5	18	13	25	14
	36		64				18		
100	36	35	76	16.5	10.5	22	18	35	20
	46		86				23		
125	36	45	76	16.5	10.5	22	18	42	20
	46		86				23		

A	H	j	K	L	l1	T	M	N	Dp	N1
50	9.5	1.5	8	21.5	26	16	M6	15	6	17
					36					
75	15	1.5	12	36	26	19	M10	20	10	22
					36					
100	21	1.5	12	45	36	19	M10	20	10	22
					46					
125	21	1.5	12	45	36	25	M10	20	12	22
					46					

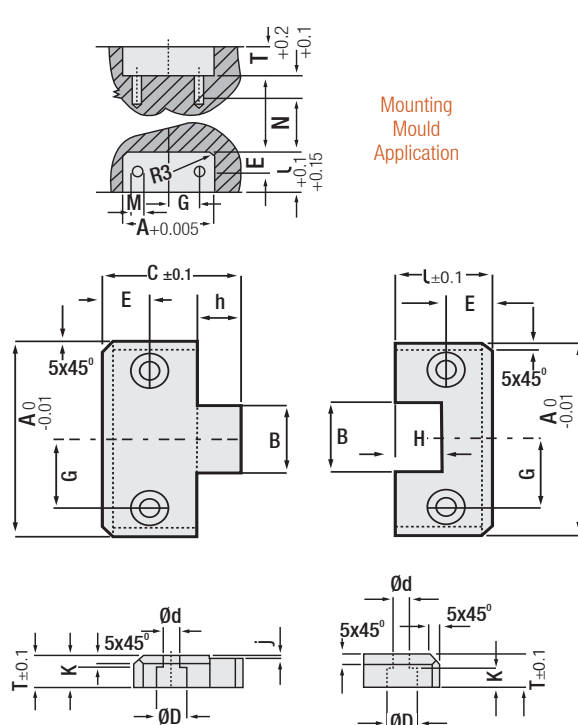


Order: **G127. A . X**

Material: 1.2510  
Hardness: 52 - 54 HRC

### Square Locating - Centring Unit

Code: **G128**



Code: **G128**

A	G	E	M	L	T	N
38	11	7	M5	17	13	15
50	17	11	M6	21.5	16	15
75	25	18	M10	36	19	20
100	35	22	M10	45	19	20
125	42	22	M10	45	25	20

A	B	C	d	D	h	H	j	K
38	11	30	5.5	9.5	8	9	1.5	5.5
50	17	30	6.5	10.5	8.5	9.5	1.5	8
75	25	50	10.5	16.5	14	15	1.5	12
100	35	65	10.5	16.5	20	21	1.5	12
125	45	65	10.5	16.5	20	21	1.5	12



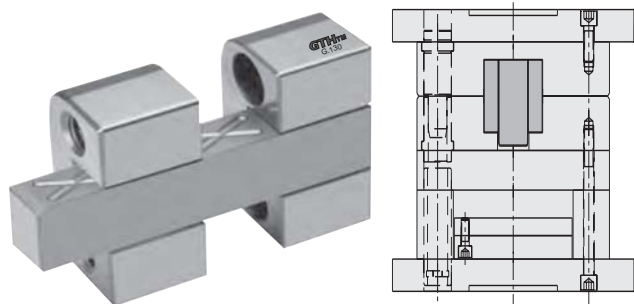
Order: **G128. A**

Material: 1.2510  
Hardness: 52 - 54 HRC

### Centring Unit - DLC Coated

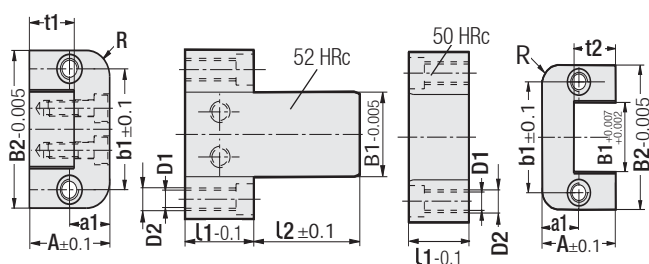
Code: G131

This product is suitable for rotational multi component moulds.



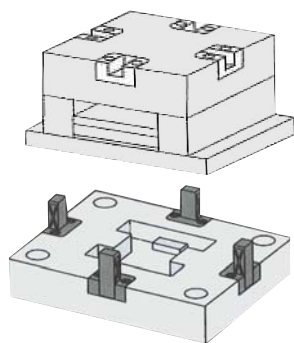
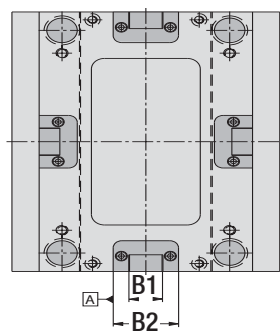
### Square Locating - Centring Unit

Code: G130



Code: G130

B1	L1	L2	A	B2	D1	D2	a1	b1	t1	t2	R
16	20	20	22	45	6.8	M8	11	30	11.5	12	8
		40									
30	26	40	35	60	6.8	M8	17.5	46	19.5	20	10
		63									
48	36	32	46	100	10.3	M12	23	74	25.5	26	12.5
		50									
		63									
77	56	50	60	150	14	M16	30	114	35.5	36	16
		71									
		100									

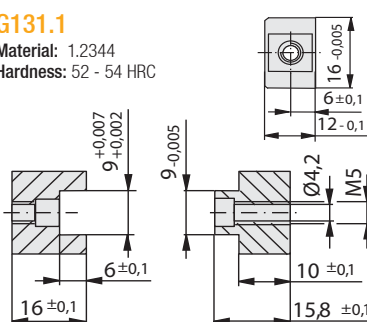


Order: G130. B1 x L1 x L2

Material: 1.2510 Hardness: 52 - 54 HRC

#### G131.1

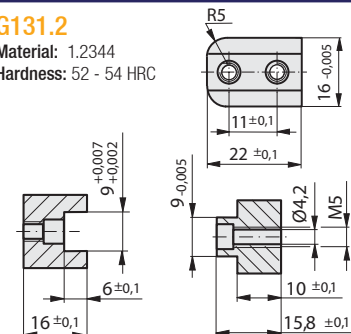
Material: 1.2344  
Hardness: 52 - 54 HRC



Order: G131.1

#### G131.2

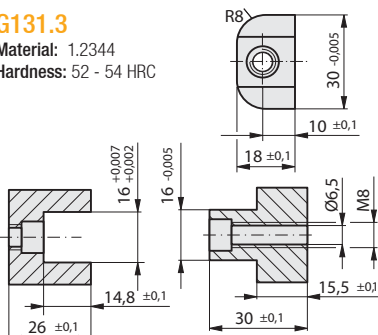
Material: 1.2344  
Hardness: 52 - 54 HRC



Order: G131.2

#### G131.3

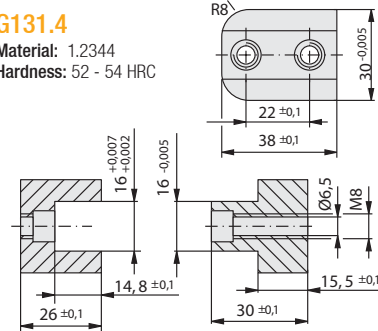
Material: 1.2344  
Hardness: 52 - 54 HRC



Order: G131.3

#### G131.4

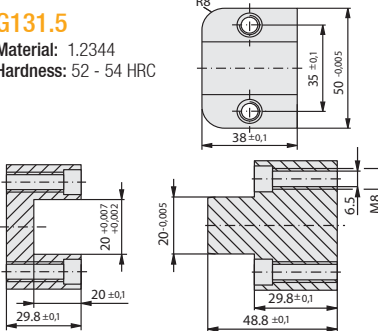
Material: 1.2344  
Hardness: 52 - 54 HRC



Order: G131.4

#### G131.5

Material: 1.2344  
Hardness: 52 - 54 HRC

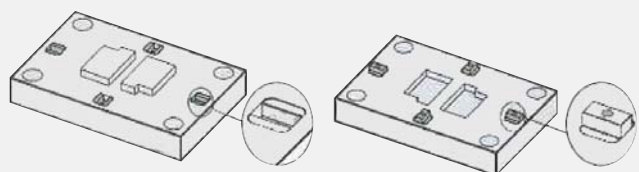
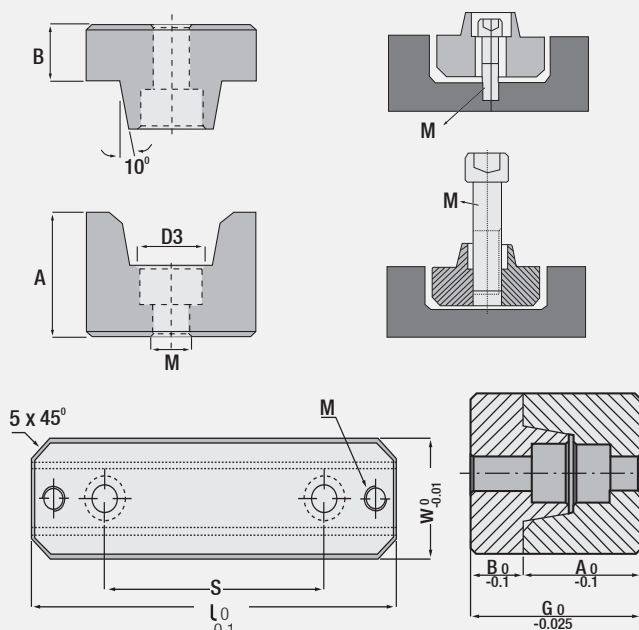


Order: G131.5



### Locating - Centring Unit

Code: **G132**



Code: **G132**

W	L	A	B	G	S	D3	M
25	50	17.5	8	25.5	-	9.6	M5
30	100	22	10	32	60	11	M6
40	150	25	13	38	100	14	M8

Order: **G132.W**

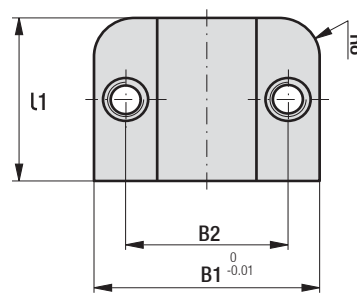
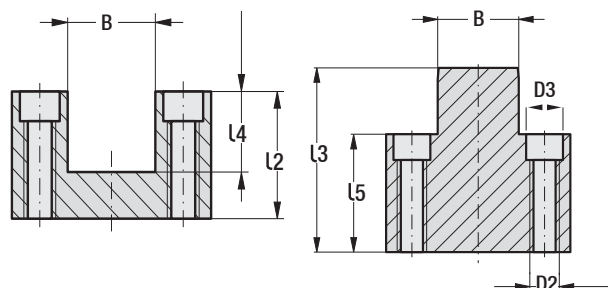
Material: 1.2510  
Hardness: 52 - 54 HRC



Oil grooves were created on the working surfaces of the products.

### Locating - Centring Unit

Code: **G129**



Order: **G129.Type**

Material: 1.2510  
Hardness: 52 - 54 HRC

Code: **G129**

Type	B	B1	B2	l1	l2	l3	l4	l5	D3	D2
1	12.7	38.1	25.5	25.4	22.2	22	13.3	9.5	9	M.5
2	25.5	63.5	44.5	38.1	34.9	34.8	19.5	15.9	11	M.6
3	36.6	88.9	63.5	50.8	44.5	44.2	25.7	19	18	M.10

**Note:** This product is not suitable for the rotational (multi component) moulds. Please use "G131" products for the rotational multi component moulds.

### Mounting Example

